



Web Console Update

BIOS Update From BMC Web Console

Altos Computing Inc. is a subsidiary of Acer

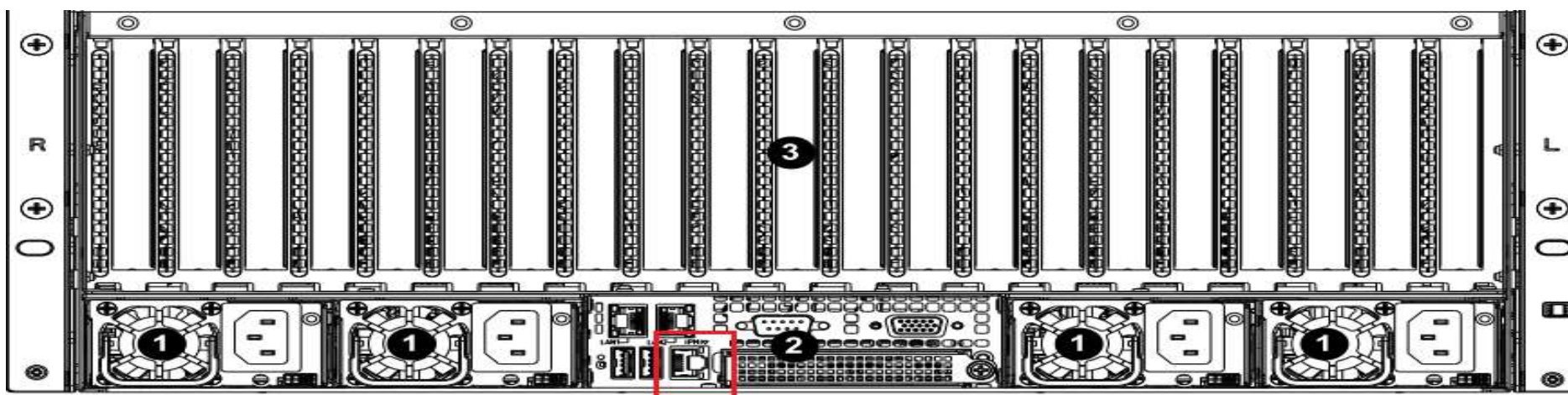


- Connect an Ethernet cable to a remote NB like below the image

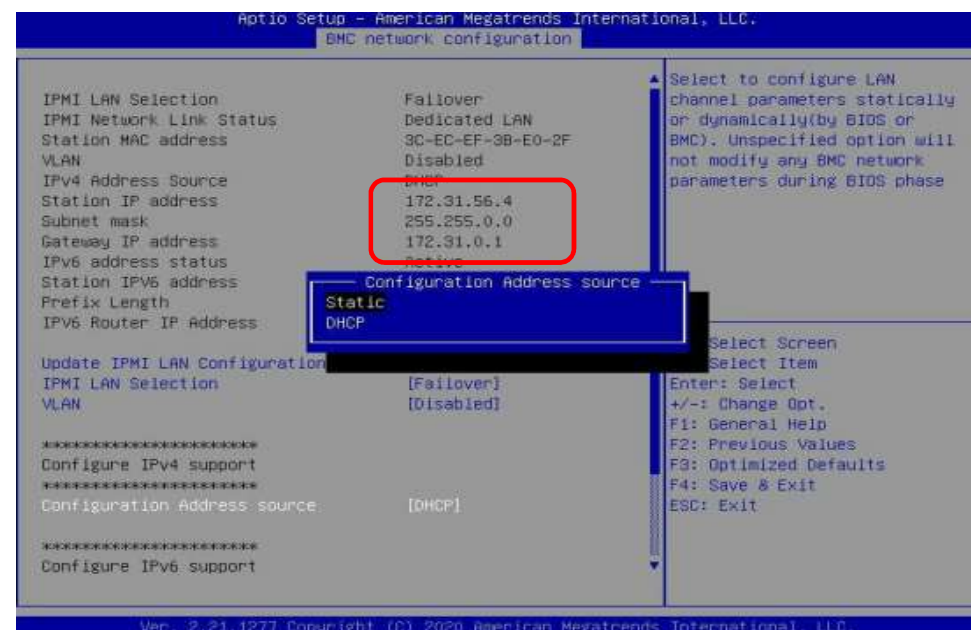
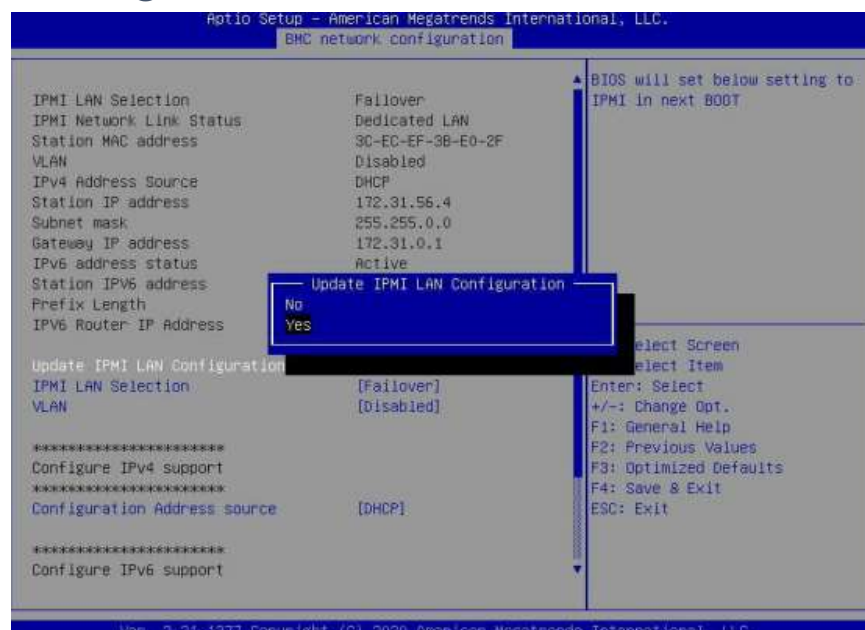
1U Server the BMC connect an Ethernet port



2U Server the BMC connect an Ethernet port

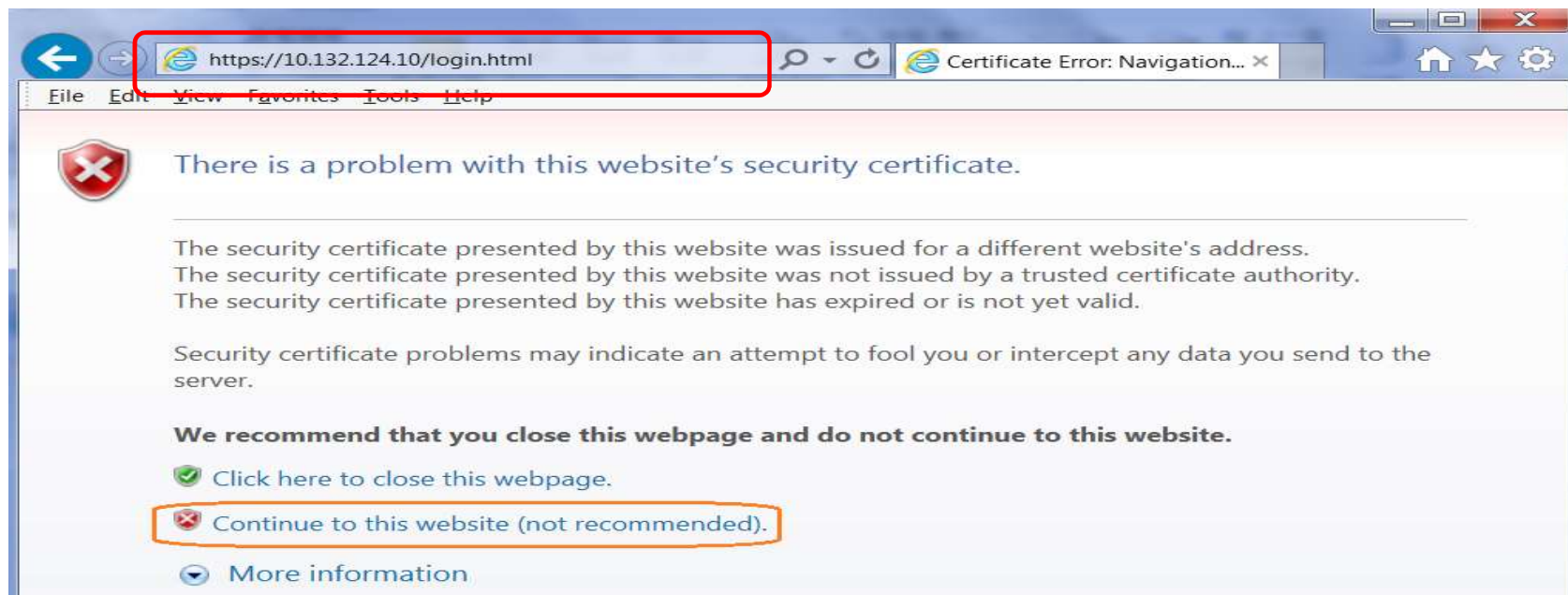


- Power on the system, and press [Del] key to enter BIOS Setup Utility. Go to the [Server Mgmt] tab and select [BMC network Configuration] item.



- Press the [Enter] key to "configuration address source" and change to [Static] option.
- Or you can use a DHCP server to assign an IP4 address automatically and see the IP4 address here

- Enter the IP address in browser's web address field in the remote NB. You will see a "There is a problem with this website's security certificate" webpage. Click on [Continue to this website (not recommended)]. Afterwards, you will see the IPMI logon webpage. This will allow you to link to the BMC web UI .



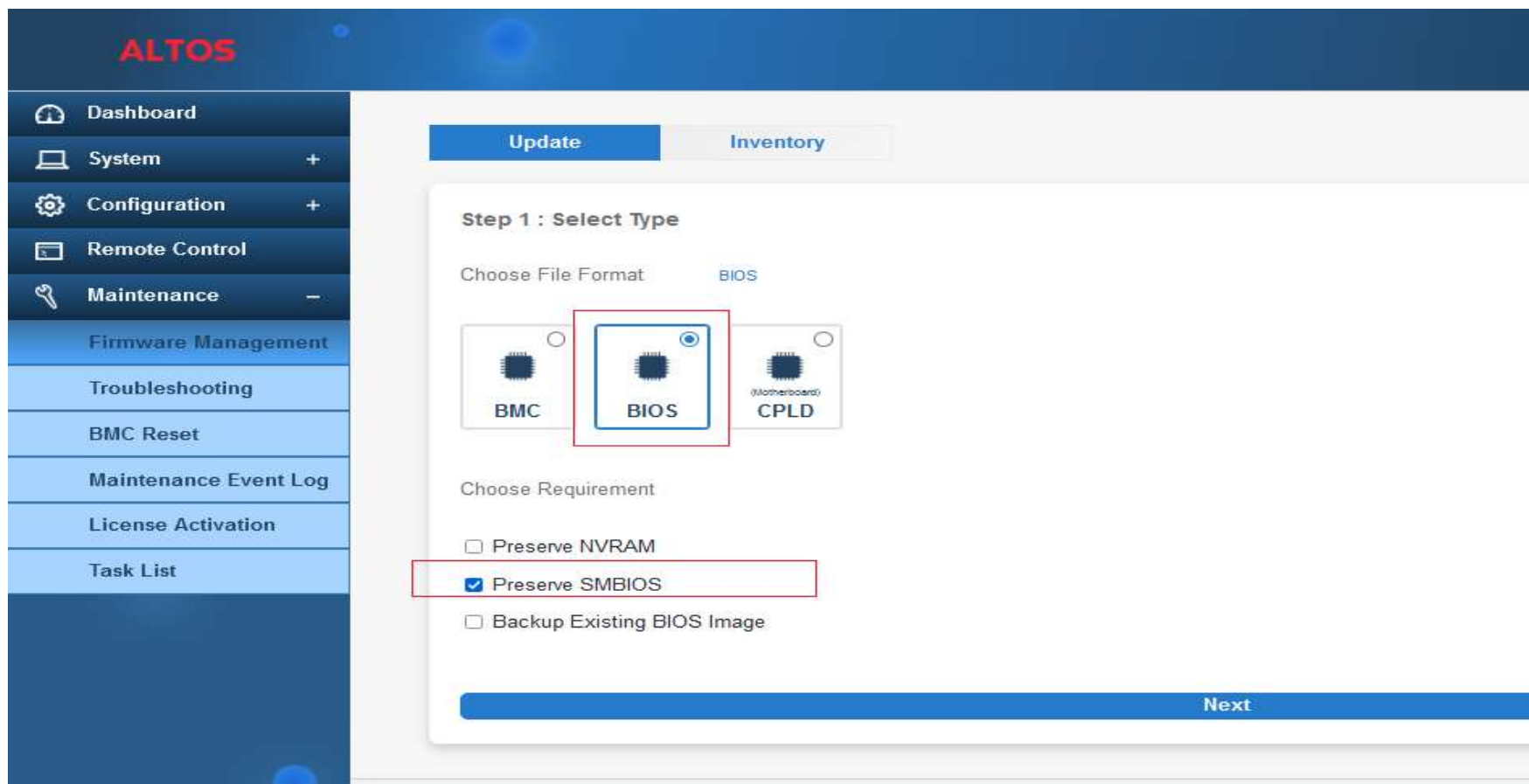
- Go to the BMC Login web UI ,the default user name and password is for user: **root** password:**Superuser@123** , after entering the username and password, click on the “Login” button.



BIOS Update

- Open **Firmware Management** Page , click the **BIOS** icon

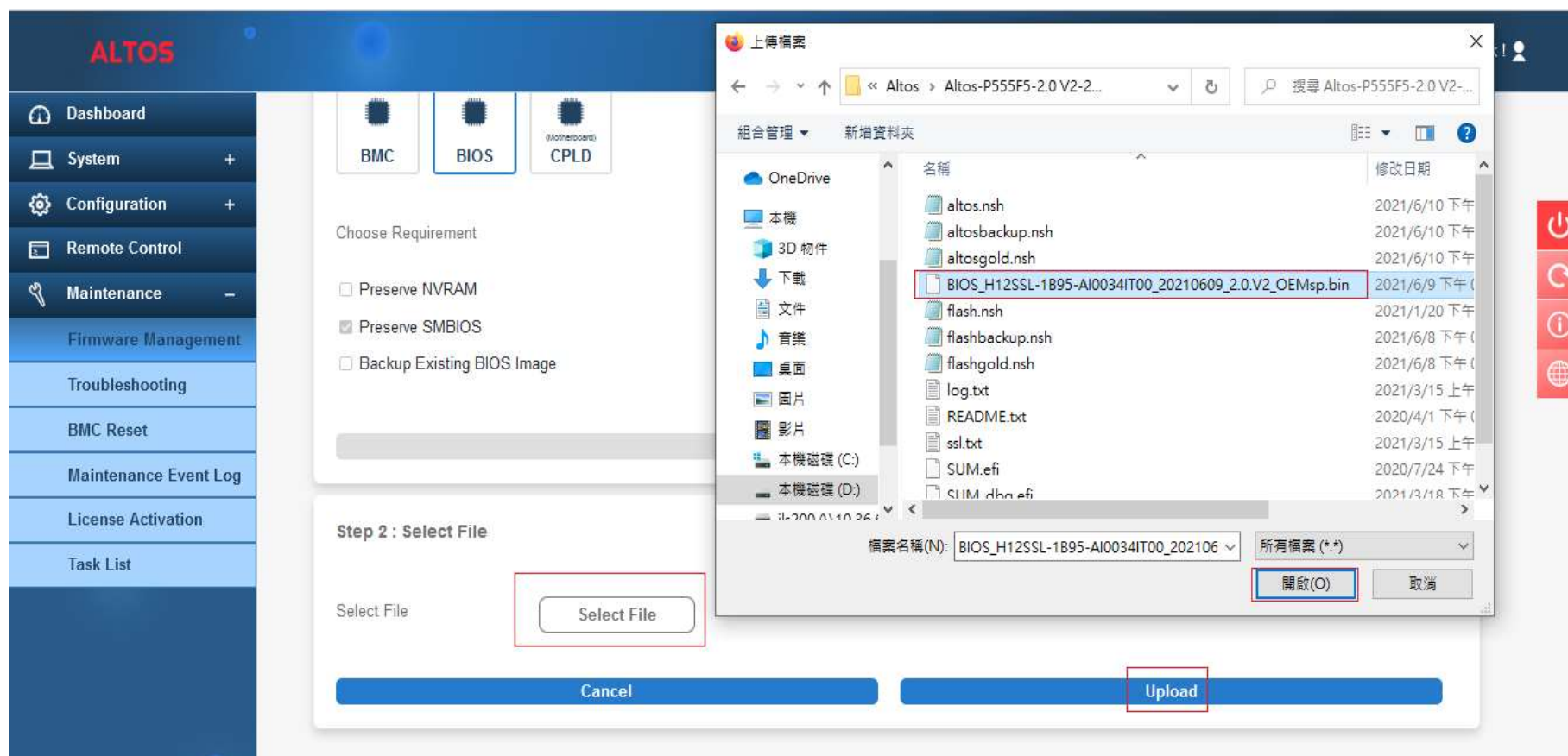
Select the configurations you want to keep. Press Next to select the BIOS file.



The screenshot shows the ALTOS web interface. On the left is a sidebar menu with the following items: Dashboard, System, Configuration, Remote Control, Maintenance, Firmware Management (highlighted), Troubleshooting, BMC Reset, Maintenance Event Log, License Activation, and Task List. The main content area has two tabs: 'Update' (active) and 'Inventory'. Under the 'Update' tab, there is a section titled 'Step 1 : Select Type'. It includes a 'Choose File Format' section with three options: BMC, BIOS (selected and highlighted with a red box), and CPLD. Below this is a 'Choose Requirement' section with three checkboxes: 'Preserve NVRAM' (unchecked), 'Preserve SMBIOS' (checked and highlighted with a red box), and 'Backup Existing BIOS Image' (unchecked). At the bottom right of the form is a blue 'Next' button.

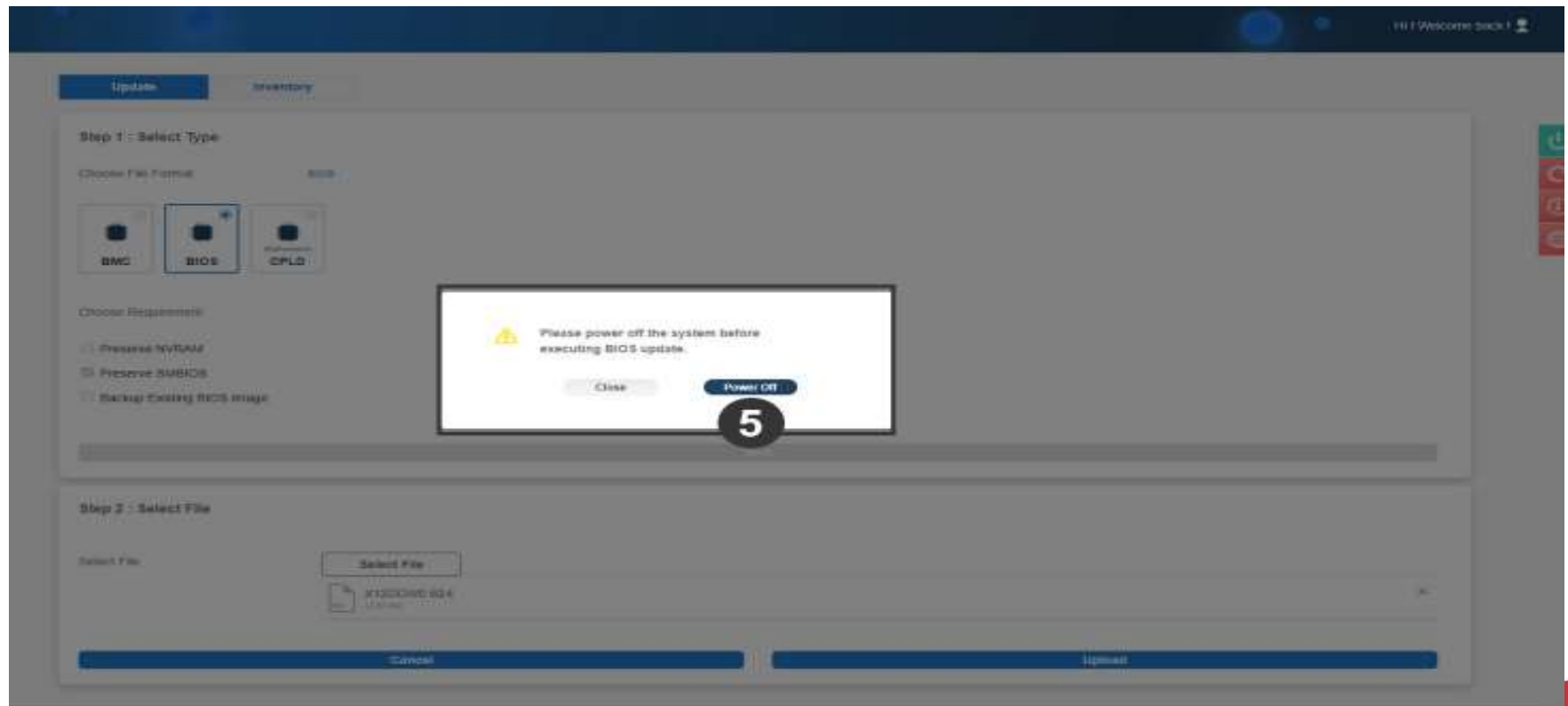
BIOS Update

- Press **Select File** to select the BIOS file, **xxxxx.bin**. Then press Upload to upload the BIOS firmware.



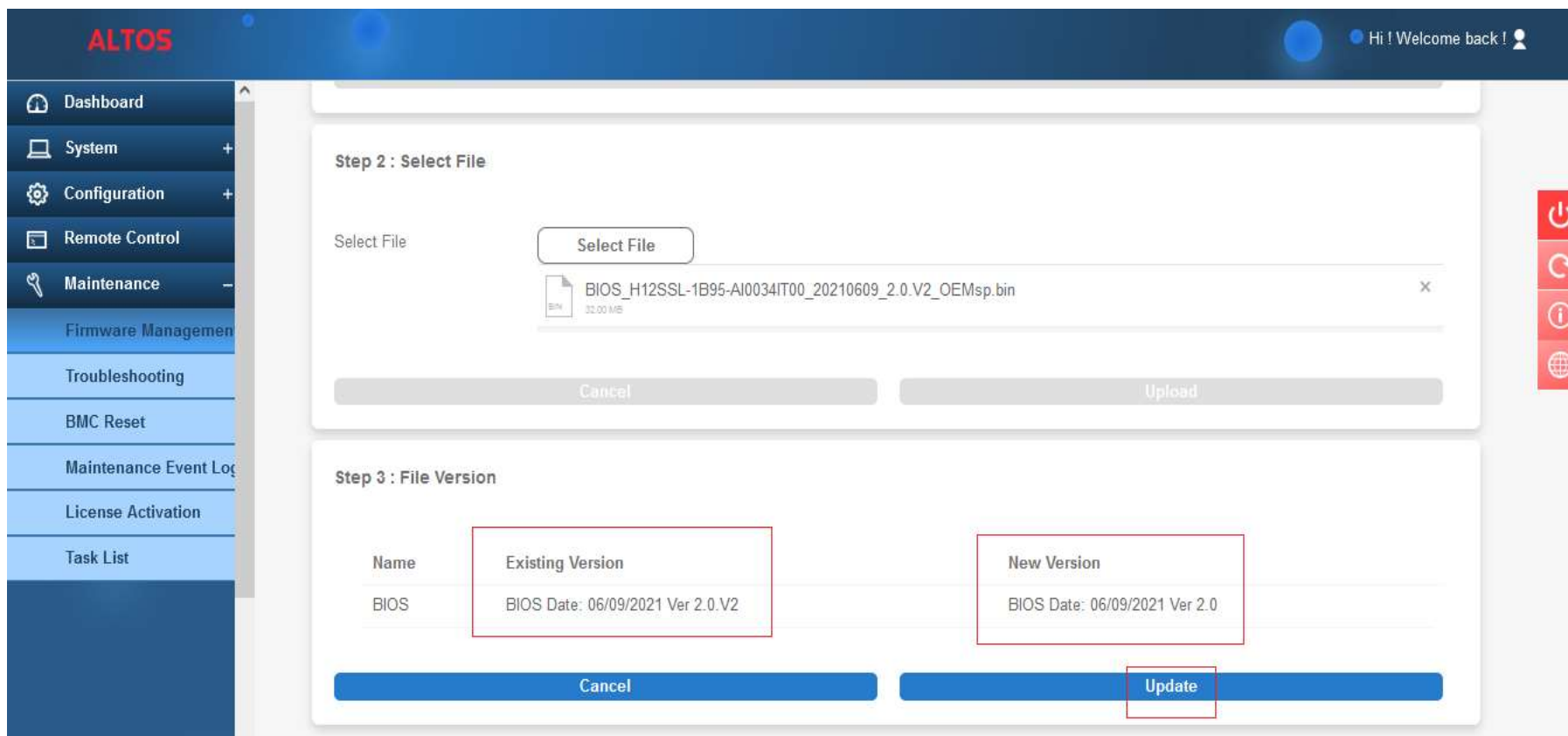
BIOS Update

- A warning will display asking you to power off the system before you proceed with BIOS update as shown number 5 below. Click Power Off before updating your BIOS.



BIOS Update

- After BIOS uploaded, the screen will show the current existing BIOS version and the new update version. Press Update to flash new BIOS.



The screenshot shows the ALTOS web interface for BIOS management. The left sidebar contains navigation links: Dashboard, System, Configuration, Remote Control, Maintenance, Firmware Management, Troubleshooting, BMC Reset, Maintenance Event Log, License Activation, and Task List. The main content area displays two steps of the update process.

Step 2 : Select File

Select File

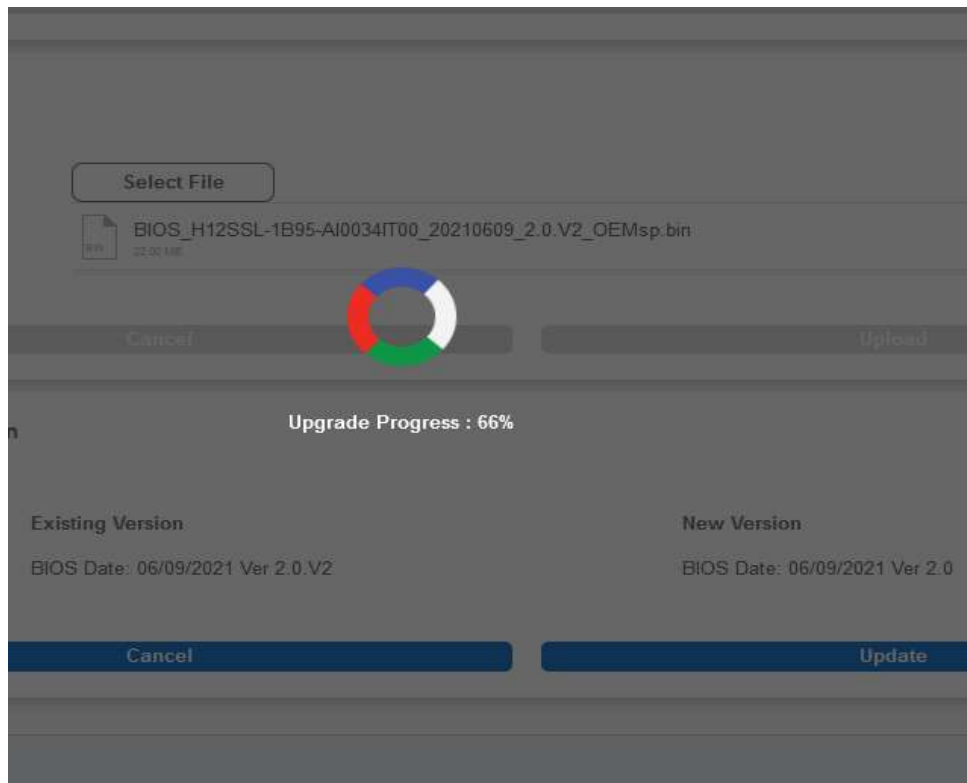
BIOS_H12SSL-1B95-AI0034IT00_20210609_2.0.V2_OEMsp.bin
32.00 MB

Step 3 : File Version

Name	Existing Version	New Version
BIOS	BIOS Date: 06/09/2021 Ver 2.0.V2	BIOS Date: 06/09/2021 Ver 2.0

BIOS Update

- When BIOS upgrading is complete, the system will reboot
- After BIOS update finished, the the screen will return to the login page





The Best is Yet To Come



For more information about Altos product and solution
Please visit Altos website (welcome scan QR code or use URL)
<https://www.altoscomputing.com/en-US>

Altos Computing Inc. is a subsidiary of Acer

