



# Web Console Update

## BMC Firmware Update From BMC Web Console

Altos Computing Inc. is a subsidiary of Acer

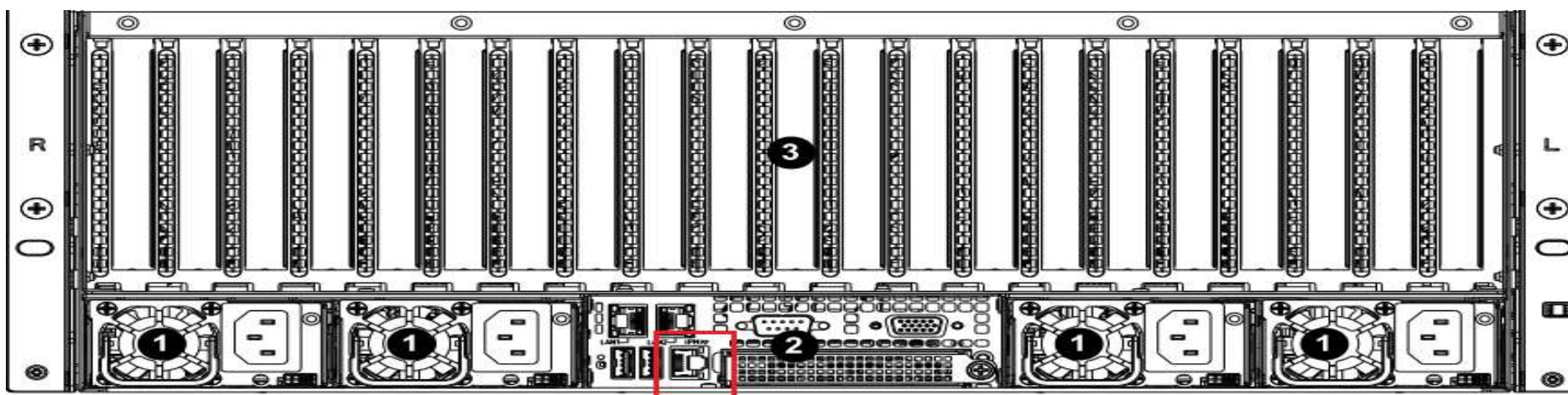


- Connect an Ethernet cable to a remote NB like below the image

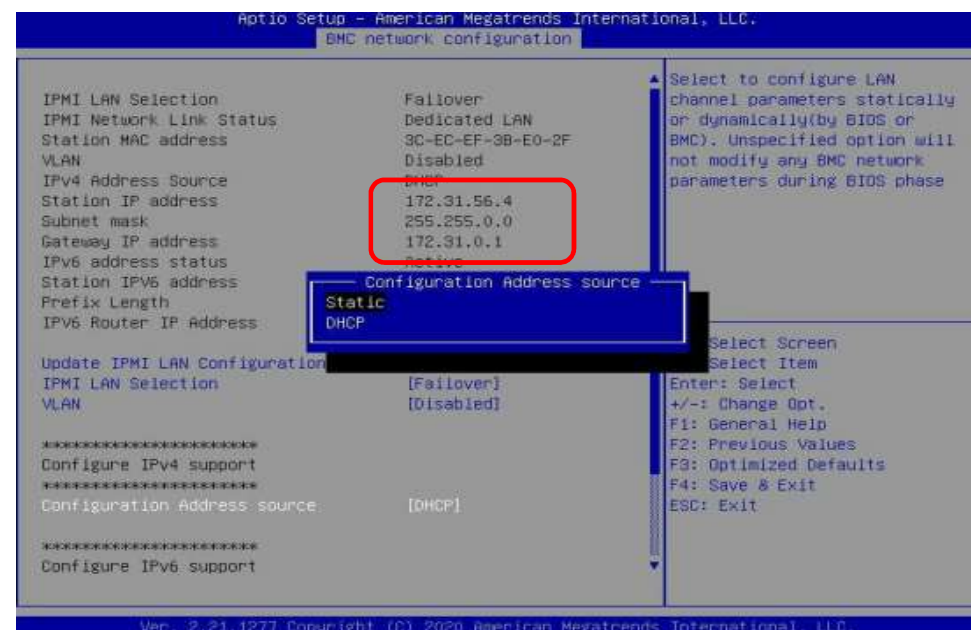
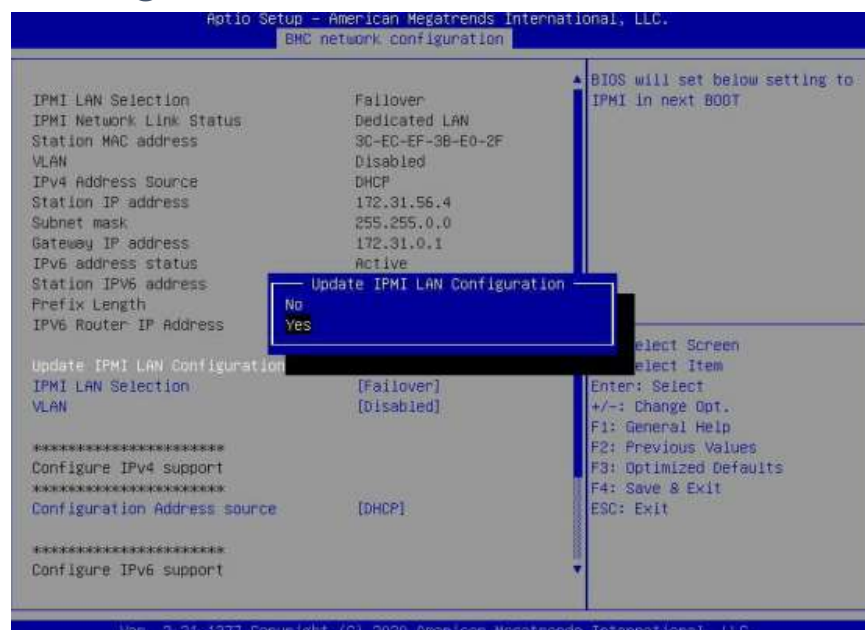
1U Server the BMC connect an Ethernet port



2U Server the BMC connect an Ethernet port

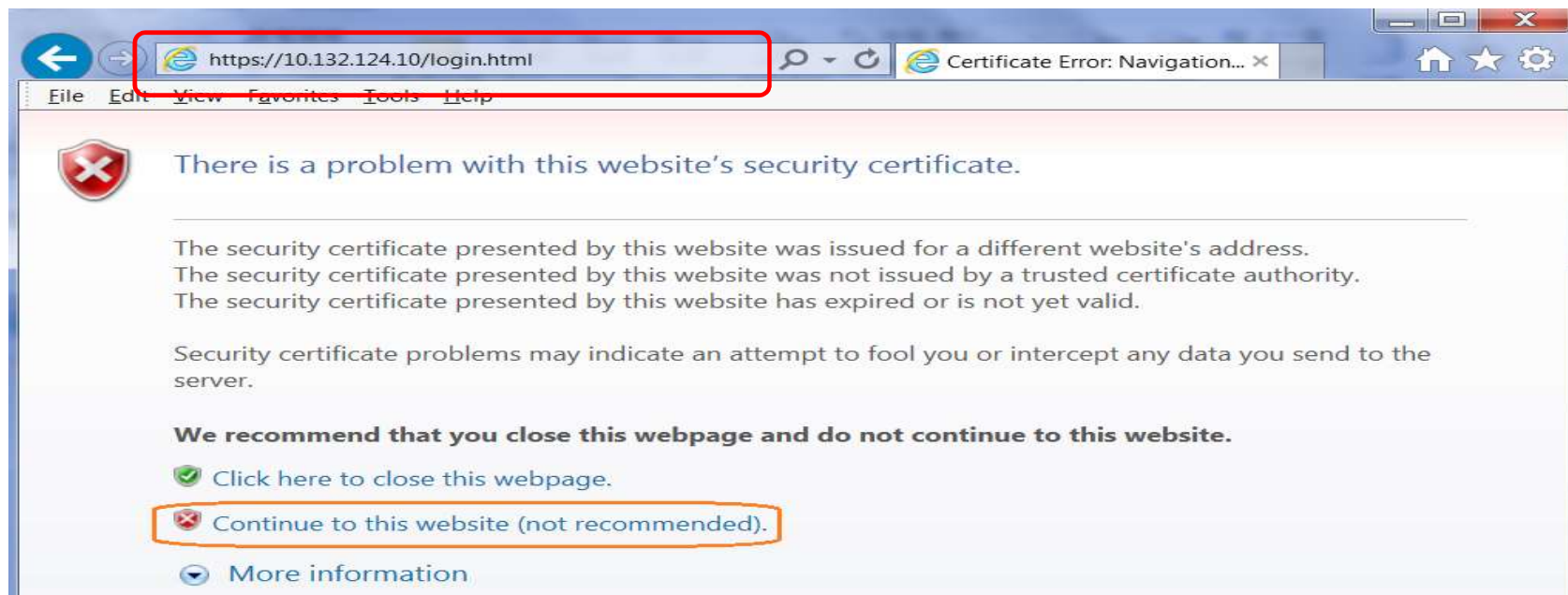


- Power on the system, and press [Del] key to enter BIOS Setup Utility. Go to the [Server Mgmt ] tab and select [BMC network Configuration] item.



- Press the [Enter] key to "configuration address source" and change to [Static] option.
- Or you can use a DHCP server to assign an IP4 address automatically and see the IP4 address here

- Enter the IP address in browser's web address field in the remote NB. You will see a "There is a problem with this website's security certificate" webpage. Click on [Continue to this website (not recommended)]. Afterwards, you will see the IPMI logon webpage. This will allow you to link to the BMC web UI .



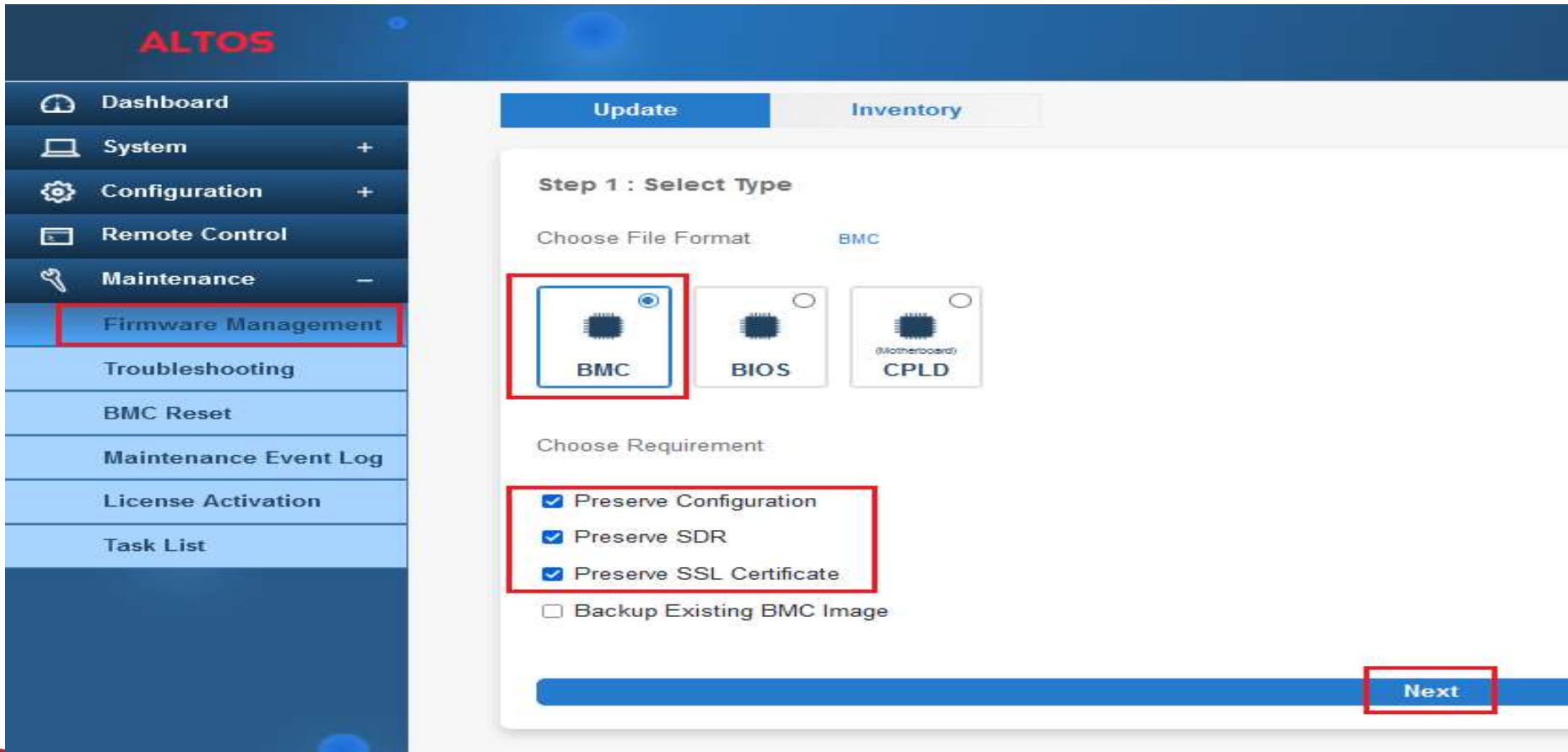


- Go to the BMC Login web UI ,the default user name and password is for user: **root** password:**Superuser@123** , after entering the username and password, click on the “Login” button.



## BMC Firmware Update

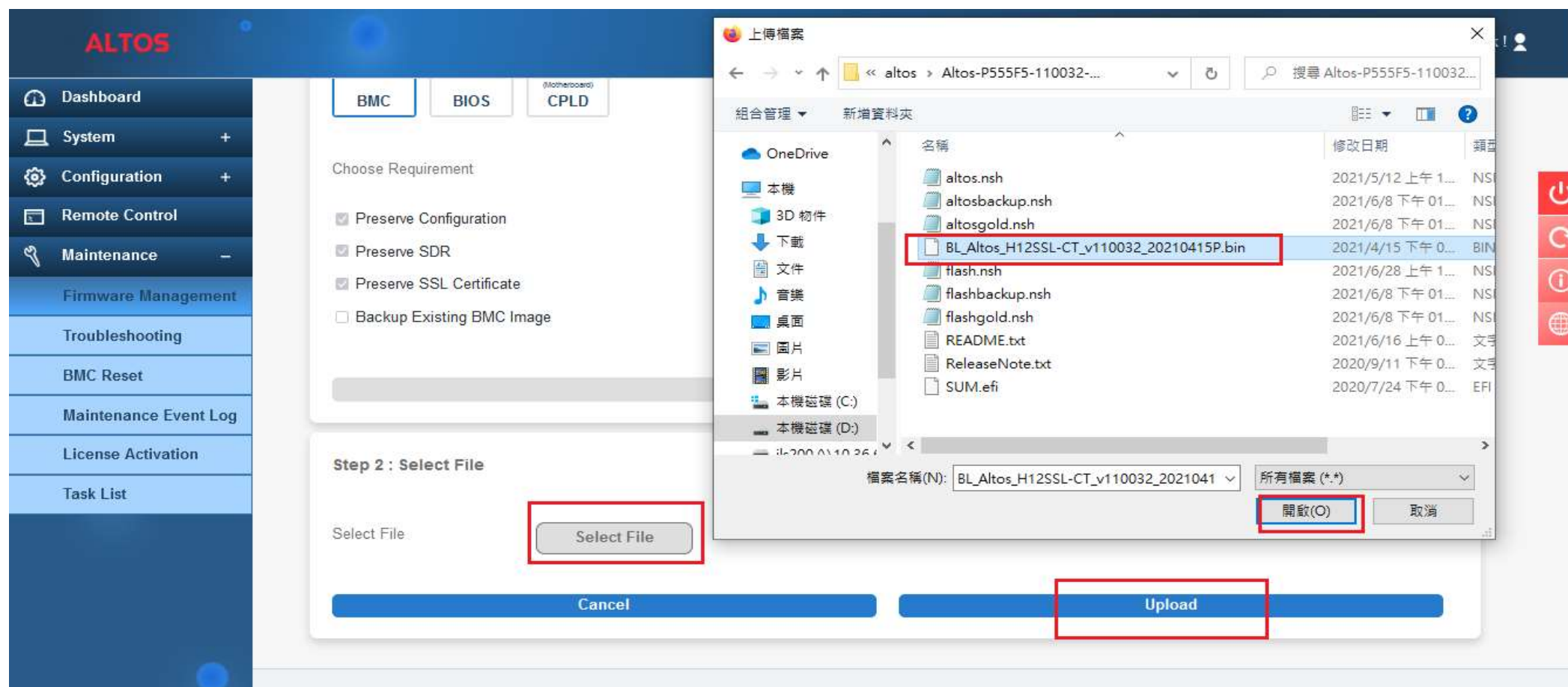
- Open Firmware Management Page , click the **BMC** icon  
Select the configurations you want to keep. Press Next to select the BMC firmware file.



The screenshot displays the ALTOS web interface for firmware management. On the left is a sidebar menu with the following items: Dashboard, System, Configuration, Remote Control, Maintenance, **Firmware Management** (highlighted with a red box), Troubleshooting, BMC Reset, Maintenance Event Log, License Activation, and Task List. The main content area has two tabs: 'Update' (active) and 'Inventory'. Under the 'Update' tab, the process is in 'Step 1 : Select Type'. It prompts the user to 'Choose File Format' with three options: 'BMC' (selected and highlighted with a red box), 'BIOS', and 'CPLD (Motherboard)'. Below this, the 'Choose Requirement' section has four checkboxes: 'Preserve Configuration' (checked), 'Preserve SDR' (checked), 'Preserve SSL Certificate' (checked), and 'Backup Existing BMC Image' (unchecked). The first three are grouped by a red box. At the bottom right of the form, a 'Next' button is highlighted with a red box.

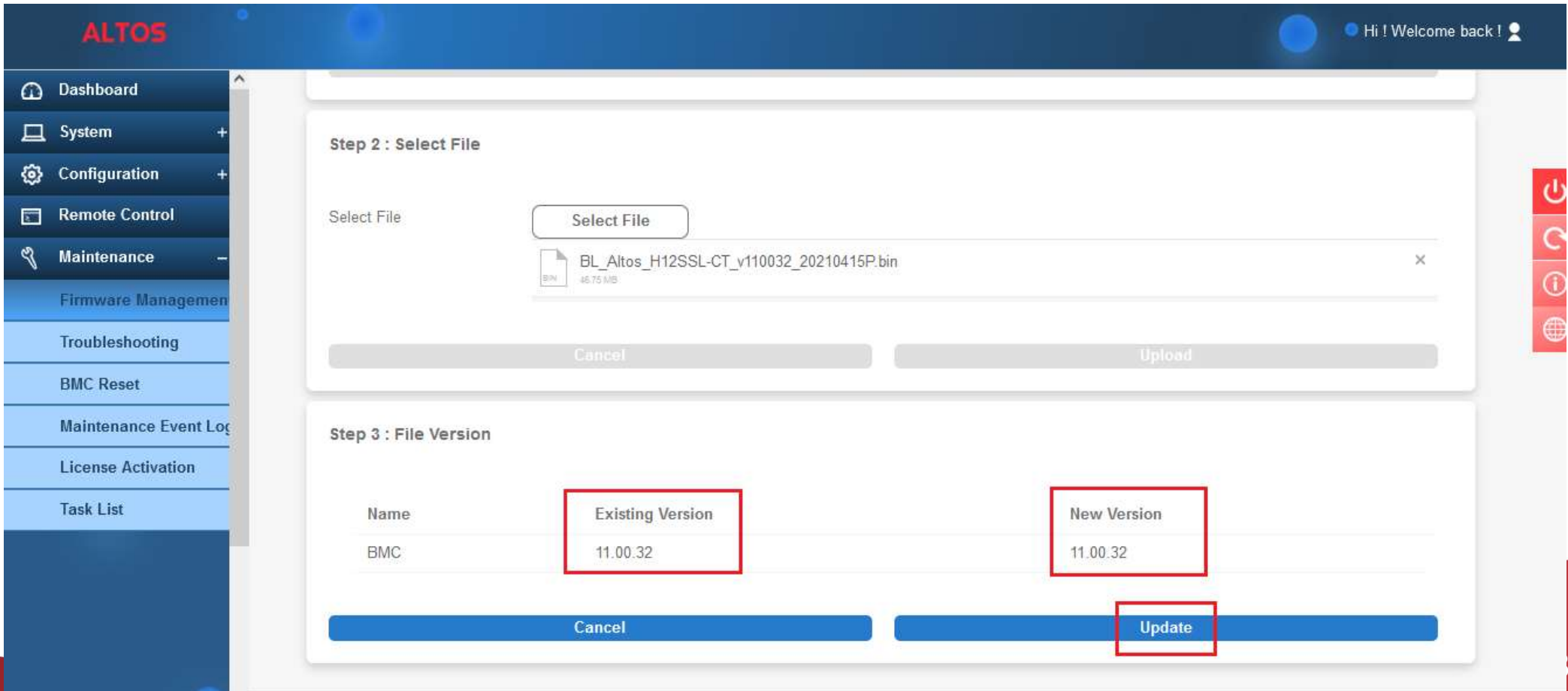
## BMC Firmware Update

- Press **Select File** to select the BMC firmware, xxxxx.bin. Then press **Upload** to upload the BMC firmware.



## BMC Firmware Update

- After BMC firmware uploaded, the screen will show the current existing BMC firmware version and the new update version. Press **Update** to flash new firmware.



The screenshot shows the ALTOS web interface for BMC Firmware Update. The left sidebar contains navigation links: Dashboard, System, Configuration, Remote Control, Maintenance, Firmware Management (highlighted), Troubleshooting, BMC Reset, Maintenance Event Log, License Activation, and Task List. The main content area displays two steps:

**Step 2 : Select File**

Select File

BL\_Altos\_H12SSL-CT\_v110032\_20210415P.bin 46.75 MB

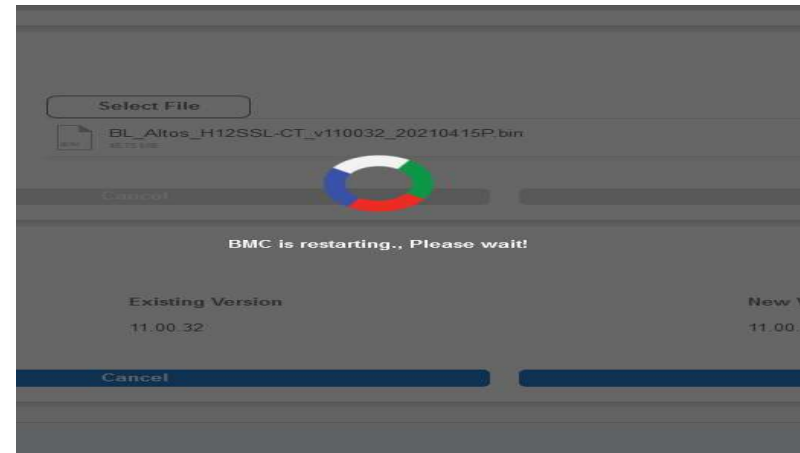
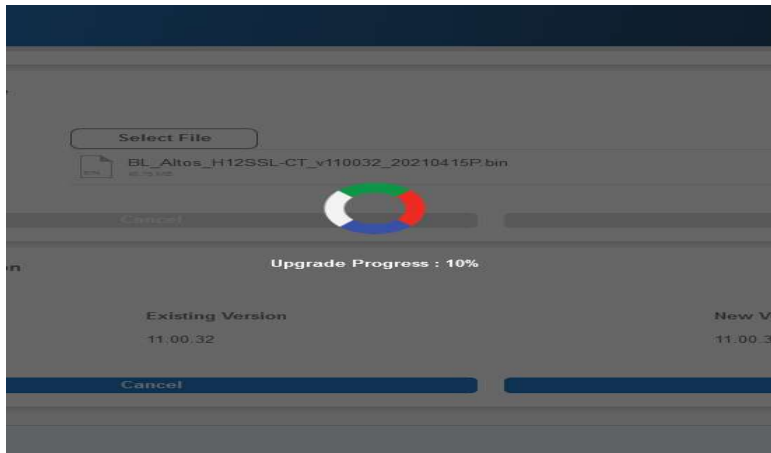
**Step 3 : File Version**

Name	Existing Version	New Version
BMC	11.00.32	11.00.32



## BMC Firmware Update

- After BMC firmware update finished, the BMC will be reset. After BMC reset, the screen will return to the login page





# The Best is Yet To Come



For more information about Altos product and solution  
Please visit Altos website (welcome scan QR code or use URL)  
<https://www.altoscomputing.com/en-US>

Altos Computing Inc. is a subsidiary of Acer

