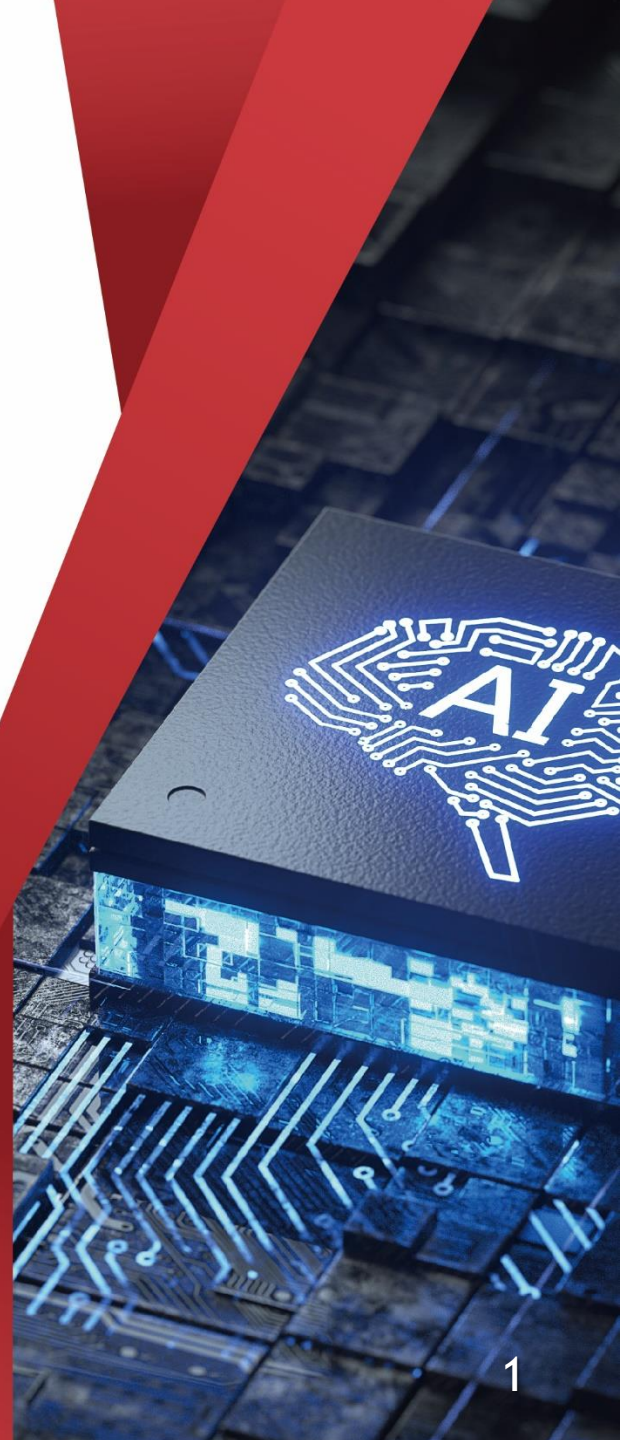


Web Console Update

BIOS Firmware Update From BMC Web Console

Prepared by Vernon Wang

Altos Computing Inc. is a subsidiary of Acer



- Connect an Ethernet cable like below the image

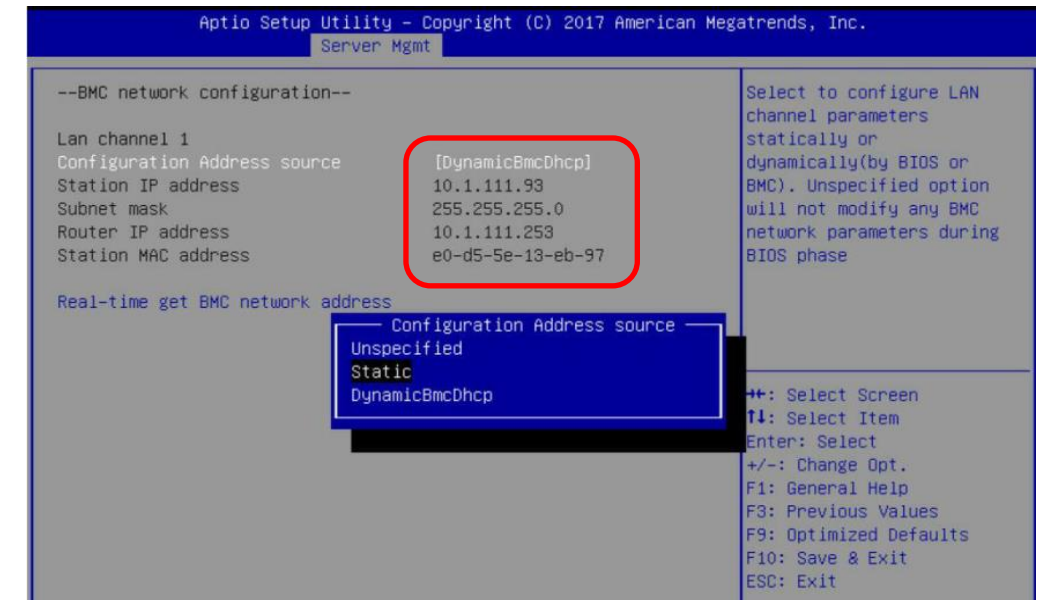
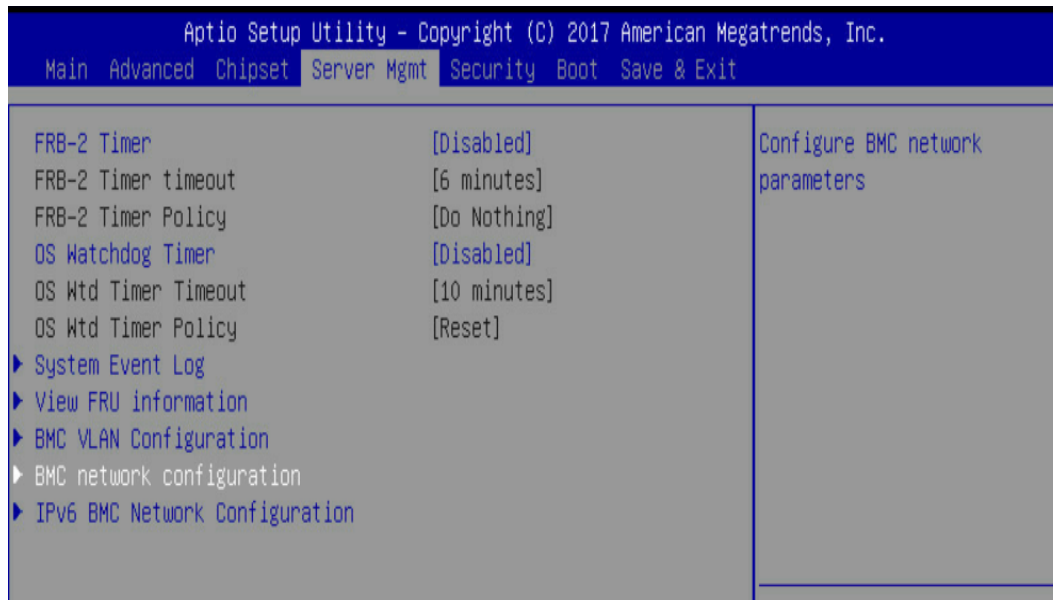
1U Server the BMC connect an Ethernet port



2U Server the BMC connect an Ethernet port

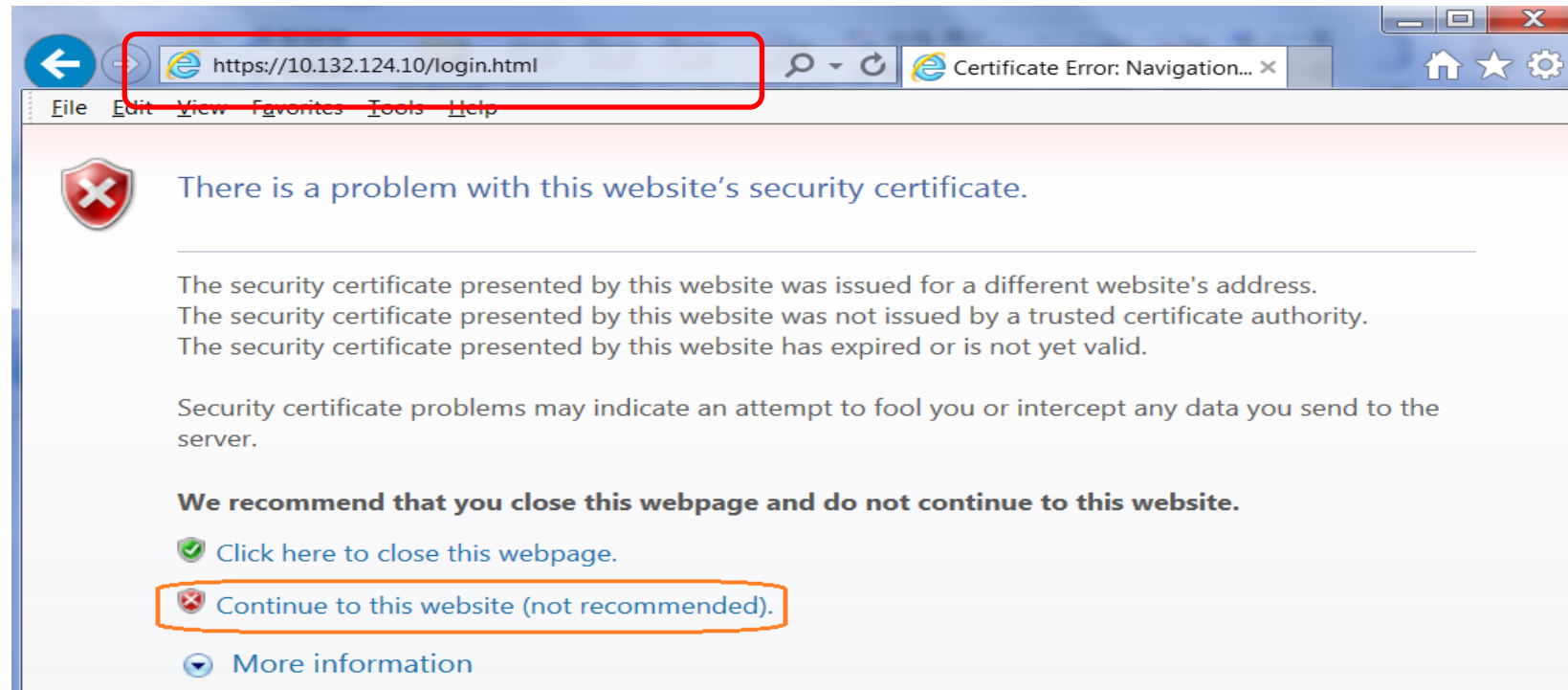


- Power on the system, and press [Del] key to enter BIOS Setup Utility. Go to the [Server Mgmt] tab and select [BMC network Configuration] item.

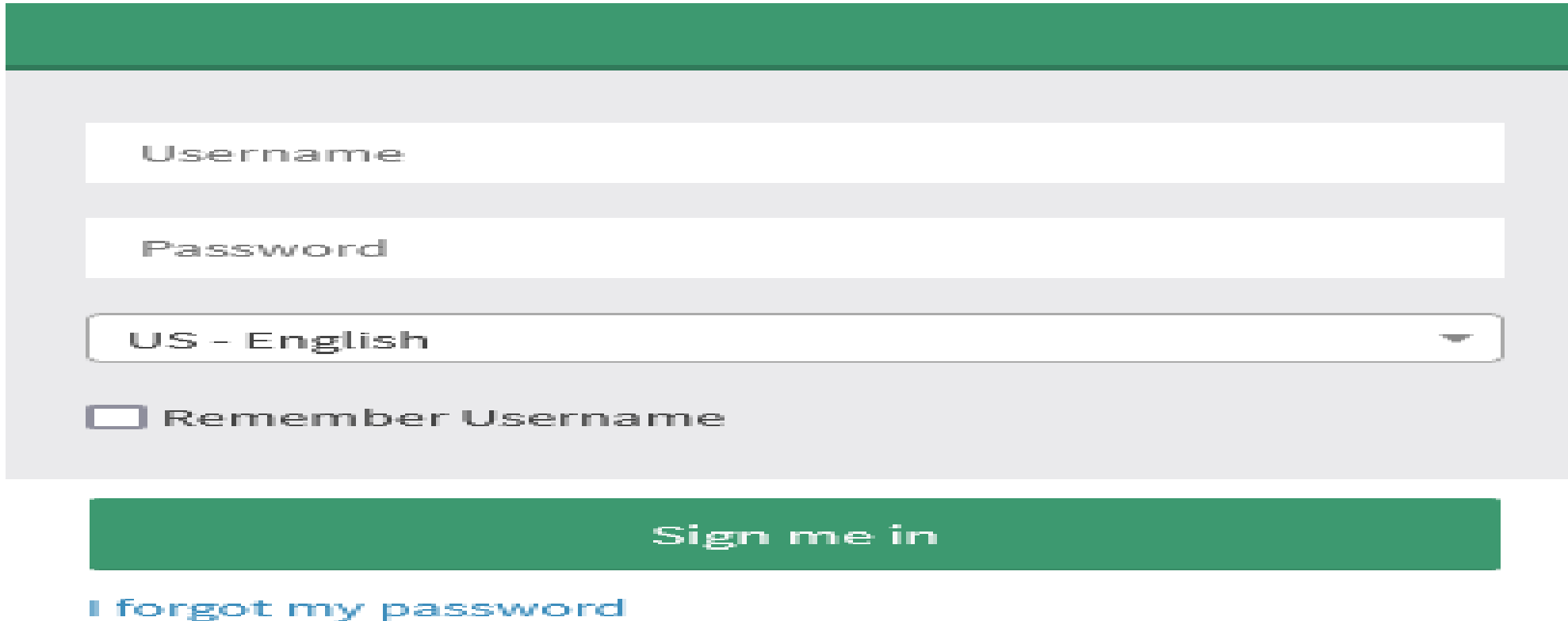


- Press the [Enter] key to “configuration address source” and change to [Static] option.
- Or you can use a DHCP server to assign an IP4 address automatically and see the IP4 address here

- Enter the IP address in browser's web address field. You will see a "There is a problem with this website's security certificate" webpage. Click on [Continue to this website (not recommended)]. Afterwards, you will see the IPMI logon webpage. This will allow you to link to the BMC web UI .



- Go to the BMC login web UI ,the default user name and password is user : **admin** password :**password** , after entering the username and password, click on the “Sign me in” button.



A screenshot of the BMC login web UI. The interface features a light gray background with a dark green header bar at the top. Below the header, there is a white rectangular area containing the login form. The form includes three input fields: 'Username', 'Password', and a language selection dropdown currently set to 'US - English'. Below these fields is a checkbox labeled 'Remember Username'. At the bottom of the form area is a large green button with the text 'Sign me in'. Below the button is a blue link that says 'I forgot my password'.

Username

Password

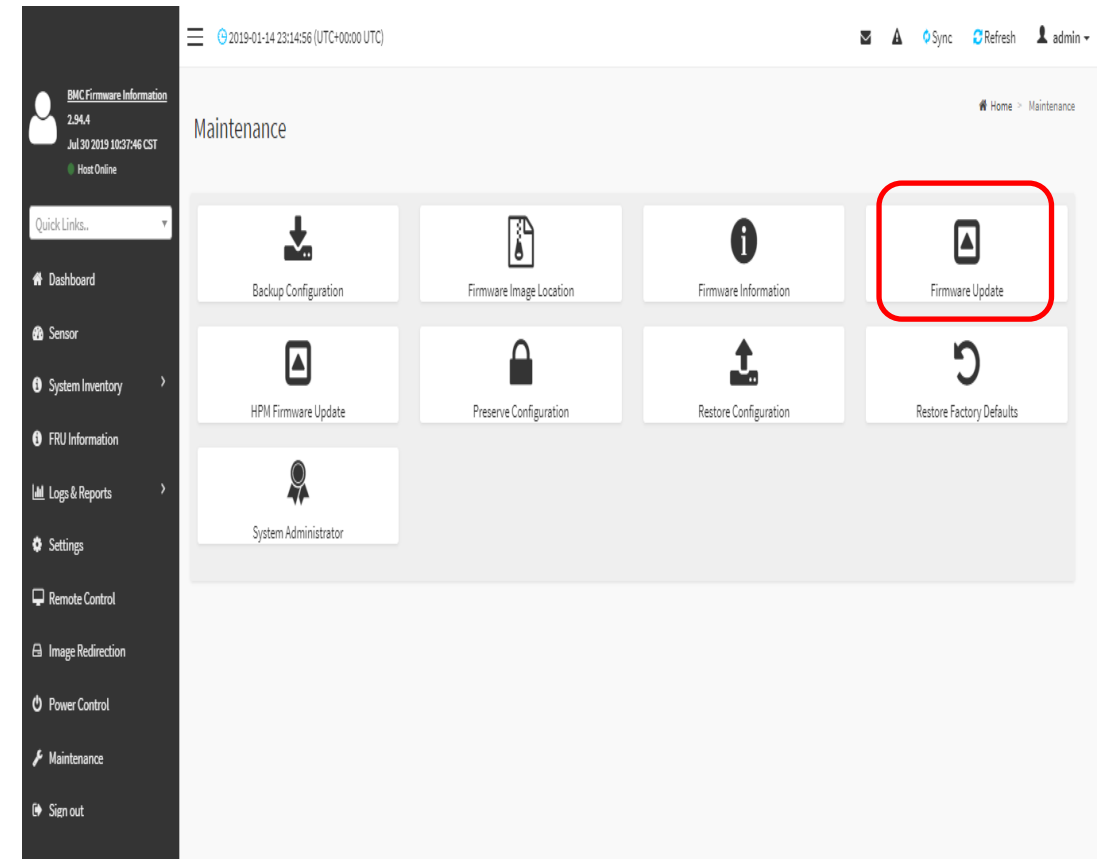
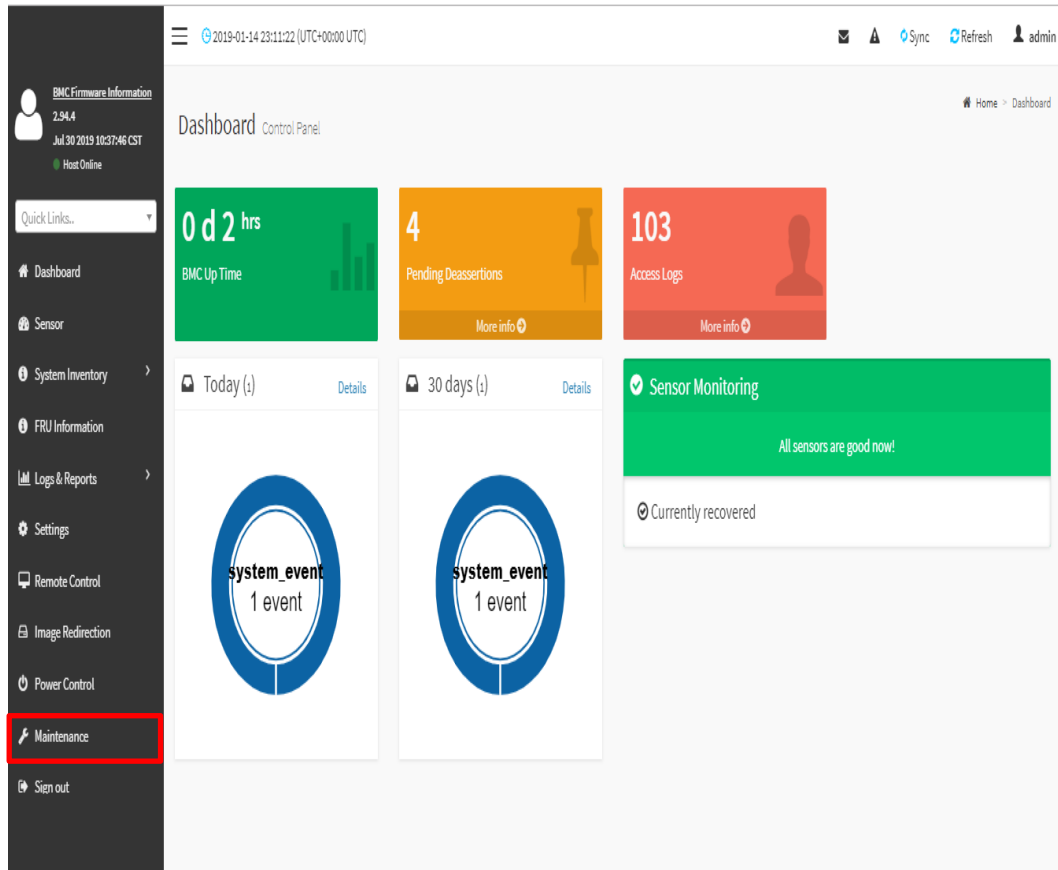
US - English

☐ Remember Username

Sign me in

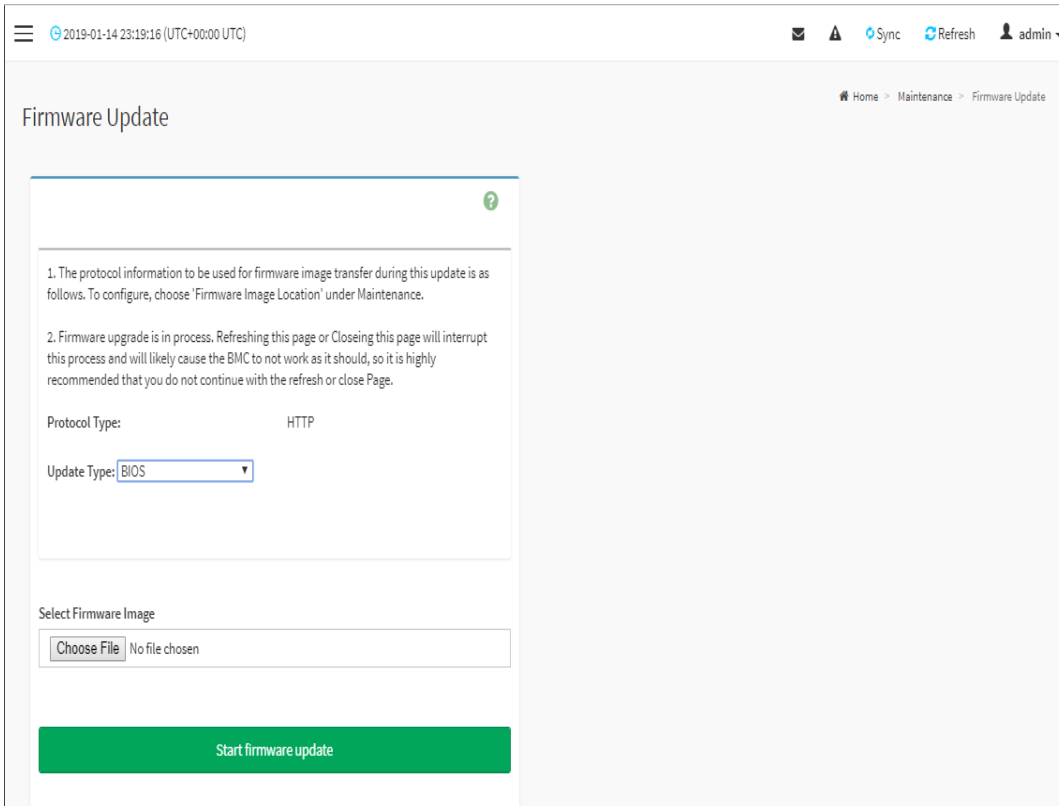
[I forgot my password](#)

- Open Firmware Update Page , click Maintenance > firmware Update from the menu bar like below the image



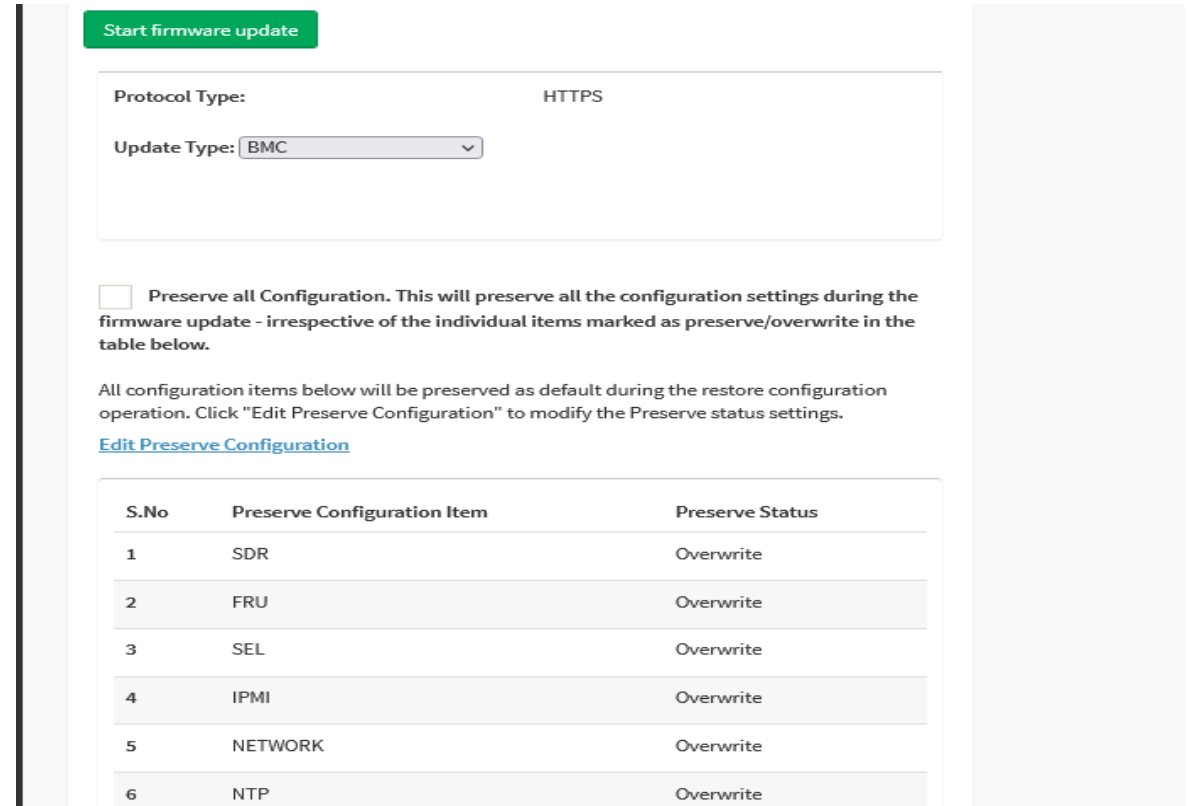
● Sample screenshot of firmware Update page shown as below

➤ Below the page is for BIOS update



The screenshot shows the 'Firmware Update' page in a web interface. At the top, there's a header with a menu icon, a timestamp '2019-01-14 23:19:16 (UTC+00:00 UTC)', and user controls for 'Sync', 'Refresh', and 'admin'. The main title 'Firmware Update' is on the left. The central area contains two numbered instructions: 1. Protocol information for image transfer (pointing to 'Firmware Image Location' in Maintenance). 2. A warning that refreshing or closing the page will interrupt the update. Below the instructions, 'Protocol Type' is set to 'HTTP' and 'Update Type' is set to 'BIOS'. A 'Select Firmware Image' section has a 'Choose File' button and 'No file chosen' text. A green 'Start firmware update' button is at the bottom.

➤ Below the page for BMC update



The screenshot shows the 'BMC Firmware Update' page. It features a green 'Start firmware update' button at the top. Below it, 'Protocol Type' is 'HTTPS' and 'Update Type' is 'BMC'. A checkbox labeled 'Preserve all Configuration' is present, with a note that it preserves settings regardless of individual table entries. A link 'Edit Preserve Configuration' is provided. A table lists configuration items to be preserved:

S.No	Preserve Configuration Item	Preserve Status
1	SDR	Overwrite
2	FRU	Overwrite
3	SEL	Overwrite
4	IPMI	Overwrite
5	NETWORK	Overwrite
6	NTP	Overwrite

● BIOS update step (1)

1. The protocol information to be used for firmware image transfer during this update is as follows. To configure, choose 'Firmware Image Location' under Maintenance.

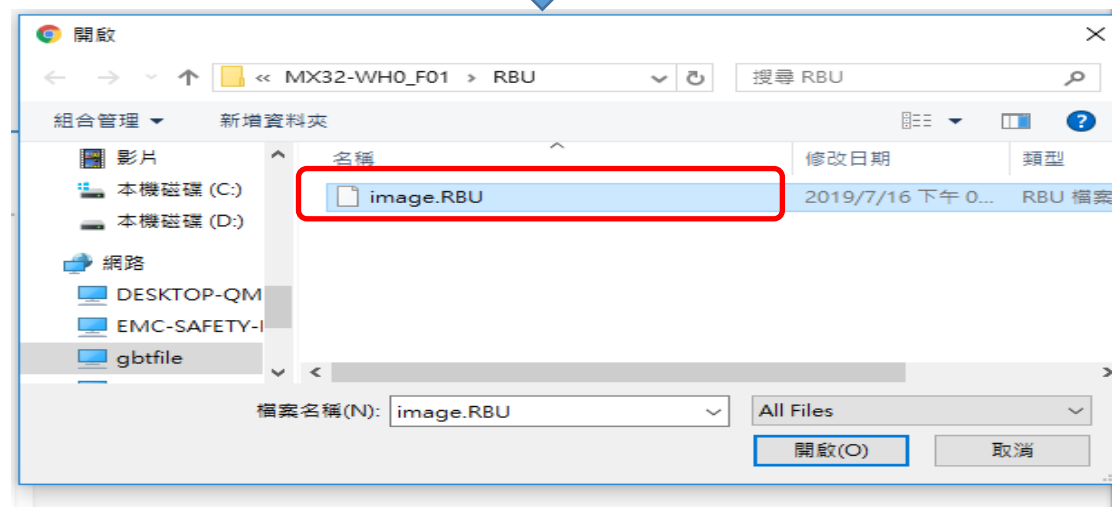
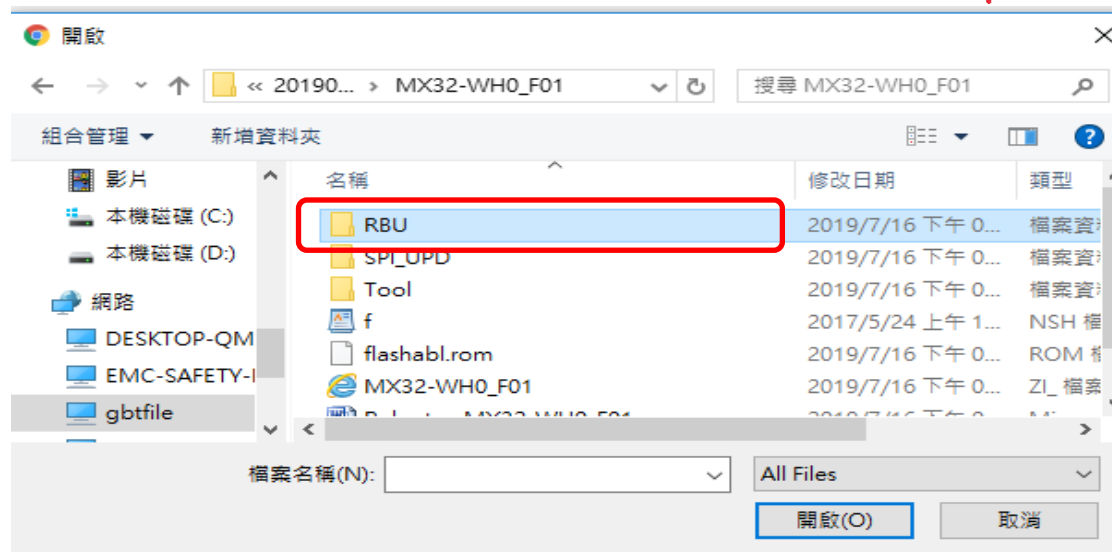
2. Firmware upgrade is in process. Refreshing this page or Closing this page will interrupt this process and will likely cause the BMC to not work as it should, so it is highly recommended that you do not continue with the refresh or close Page.

Protocol Type: HTTP

Update Type: BIOS

Select Firmware Image

No file chosen



● BIOS update step (2)

Upload the image.RBU file click "start firmware update" button ,after then please click another page the "OK" button

Firmware Update

1. The protocol information to be used for firmware image transfer during this update is as follows. To configure, choose 'Firmware Image Location' under Maintenance.

2. Firmware upgrade is in process. Refreshing this page or Closeing this page will interrupt this process and will likely cause the BMC to not work as it should, so it is highly recommended that you do not continue with the refresh or close Page.

Protocol Type: HTTP

Update Type: BIOS

Select Firmware Image

Choose File image.RBU

Start firmware update



Firmware Update

10.1.11.73 says
We will start the firmware upgrade now. Please reset system after BIOS update finish. Do you want to continue?

OK Cancel

1. The protocol information to be used for firmware image transfer during this update is as follows. To configure, choose 'Firmware Image Location' under Maintenance.

2. Firmware upgrade is in process. Refreshing this page or Closeing this page will interrupt this process and will likely cause the BMC to not work as it should, so it is highly recommended that you do not continue with the refresh or close Page.

Protocol Type: HTTP

Update Type: BIOS

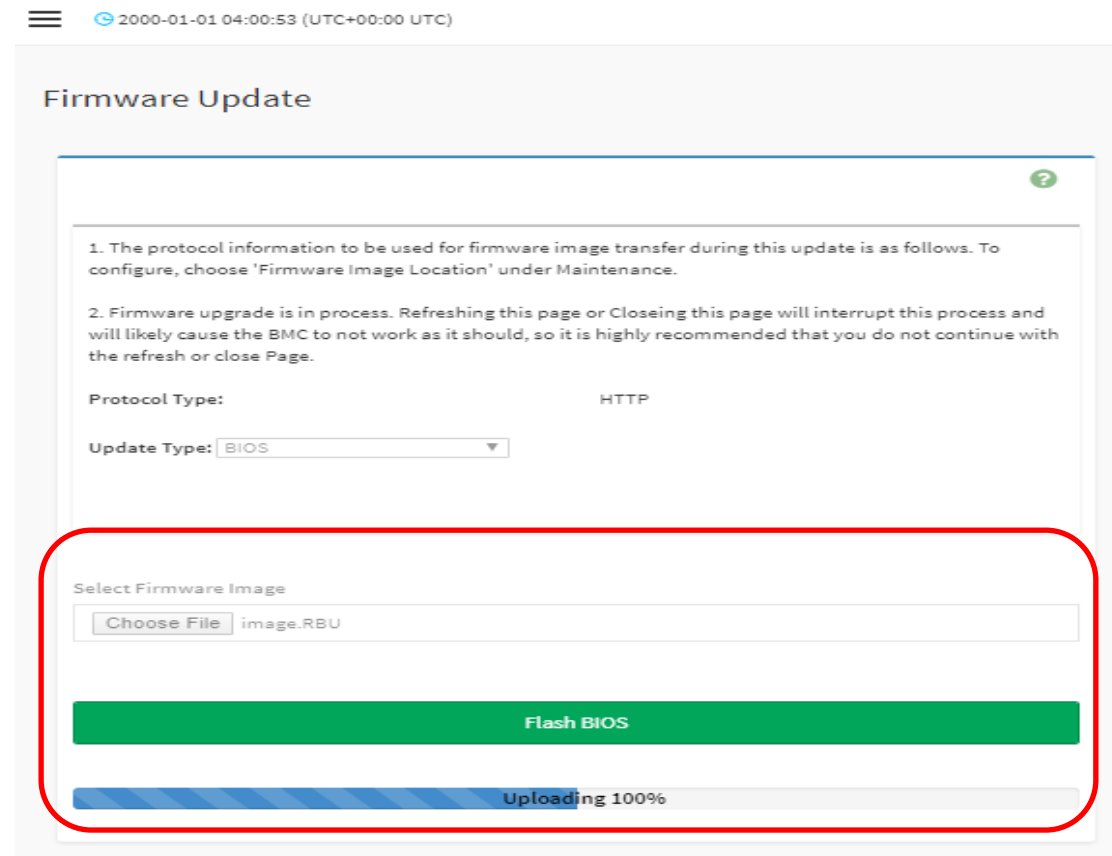
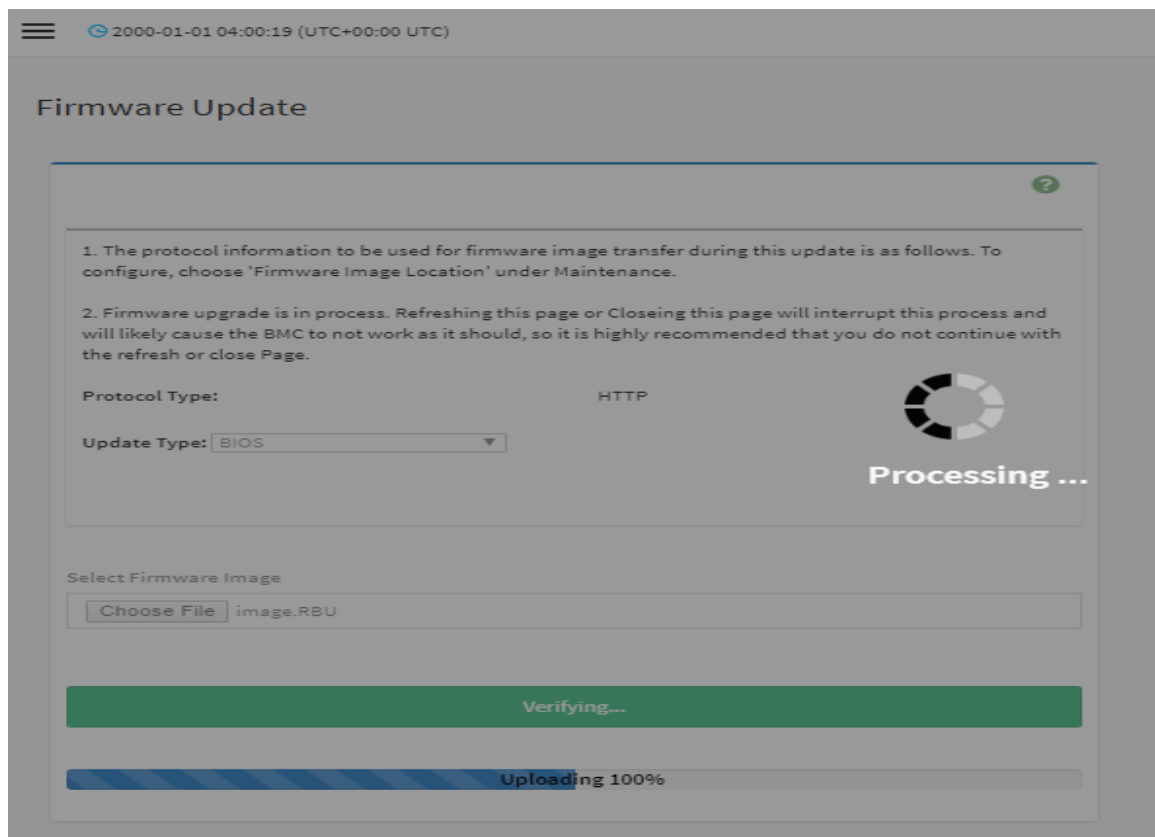
Select Firmware Image

Choose File image.RBU

Start firmware update

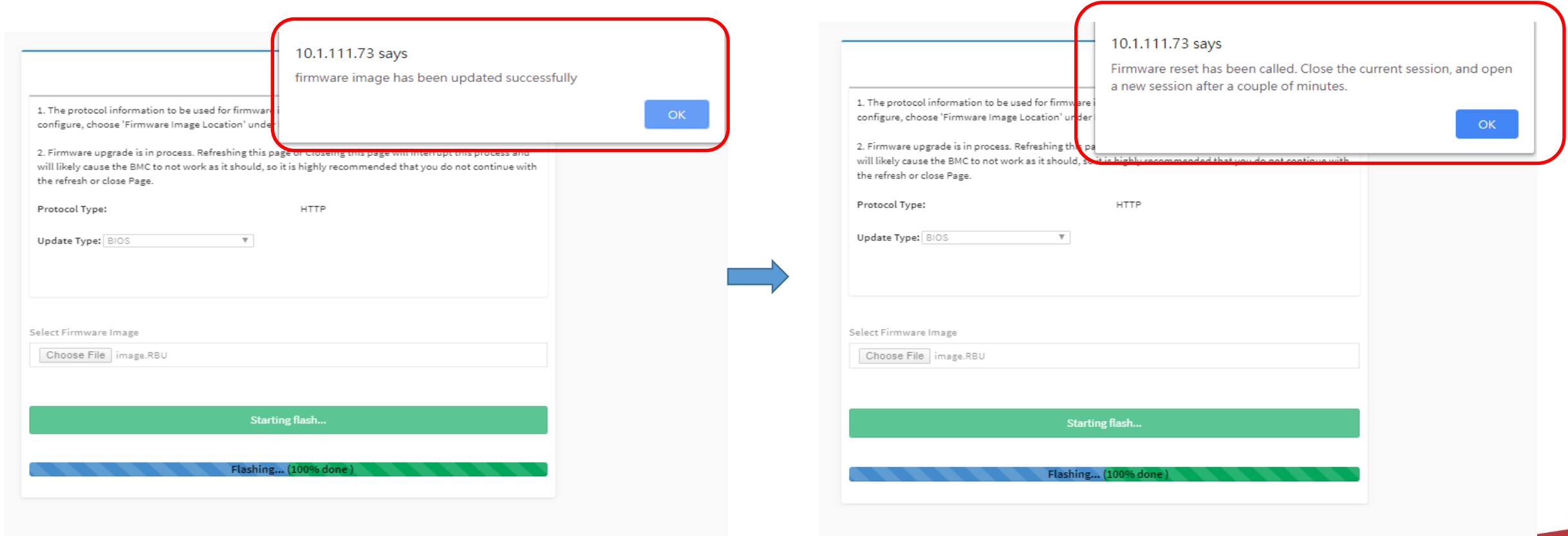
● BIOS update step (3)

Upload 100% please click "Flash BIOS" Button



● BIOS update step (4)

Waiting for flashing to 100% please click updated successfully “ok” button after will jump another window also click “OK” button . **After then please AC cycle**



The Best is Yet To Come



For more information about Altos product and solution
Please visit Altos website (welcome scan QR code or use URL)
<https://www.altoscomputing.com/en-US>

