

Altos BrainSphere S340 F6

System BIOS Firmware

Upgrade Guide

Version 1.0

Table of Content

Chapter 1. Configure the BMC LAN IP address. 3

Chapter 2. Update the BIOS firmware in BMC Web UI 4

Preface

1. Please visit the official Altos website and download the latest firmware update package for your system model.

Link : <https://www.altoscomputing.com/en-US/download>

2. Please update your system firmware with caution, as incorrect firmware updates can lead to system damage.

Chapter 1. Configure the BMC LAN IP address.

1. After the system boots, press the DEL key to enter BIOS Setup, select the **"Server Mgmt"** page, and enter **"BMC Network Configuration"** to set the BMC LAN IP. You can choose Static or DHCP according to your preference to configure the IP address.

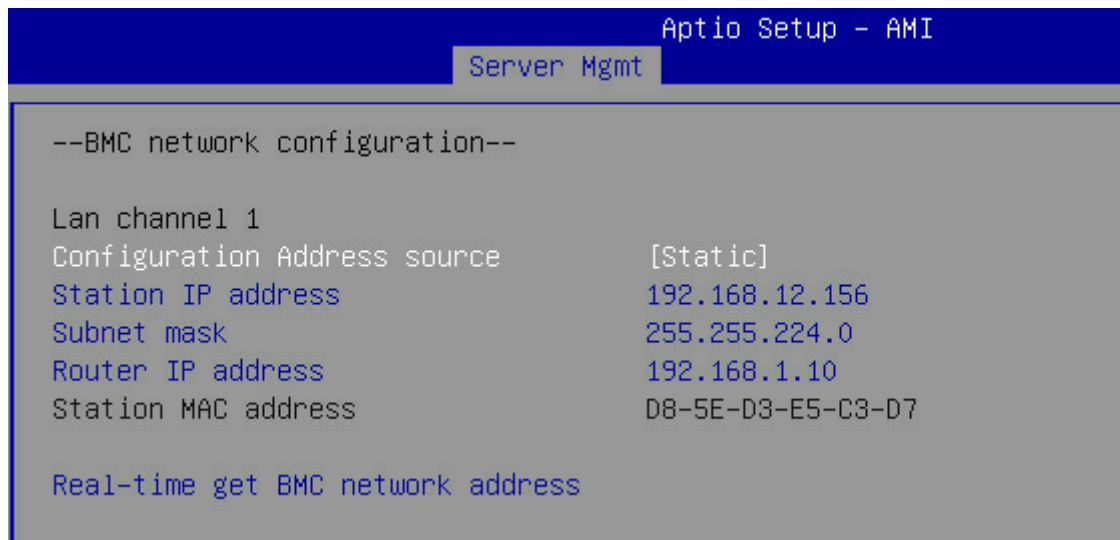


Figure 1.

2. According to your configuration, enter the IP 192.168.12.156 in the browser to access the BMC Web UI.

Default username: *admin*

Default password: *password*

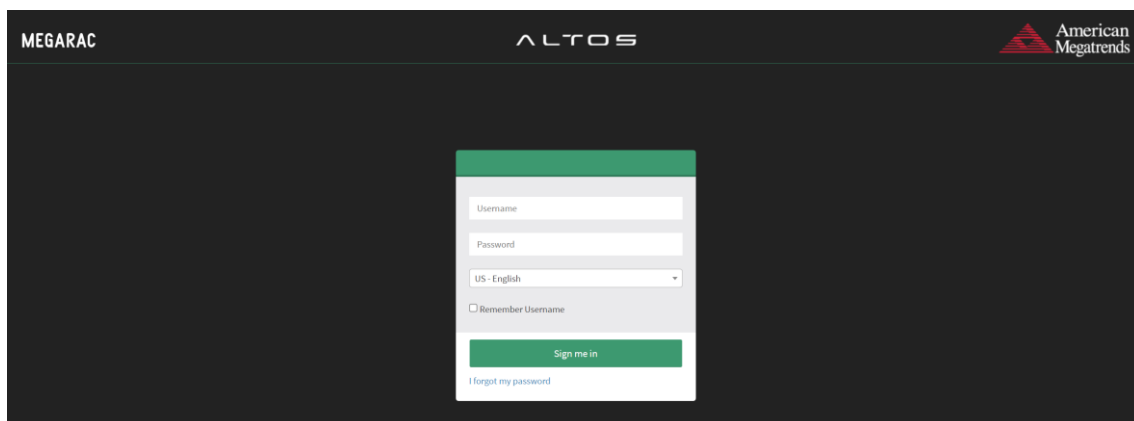


Figure 2.

Chapter 2. Update the BIOS firmware in BMC Web UI

1. Access the BMC Web UI, go to the maintenance page, and select the firmware update option.

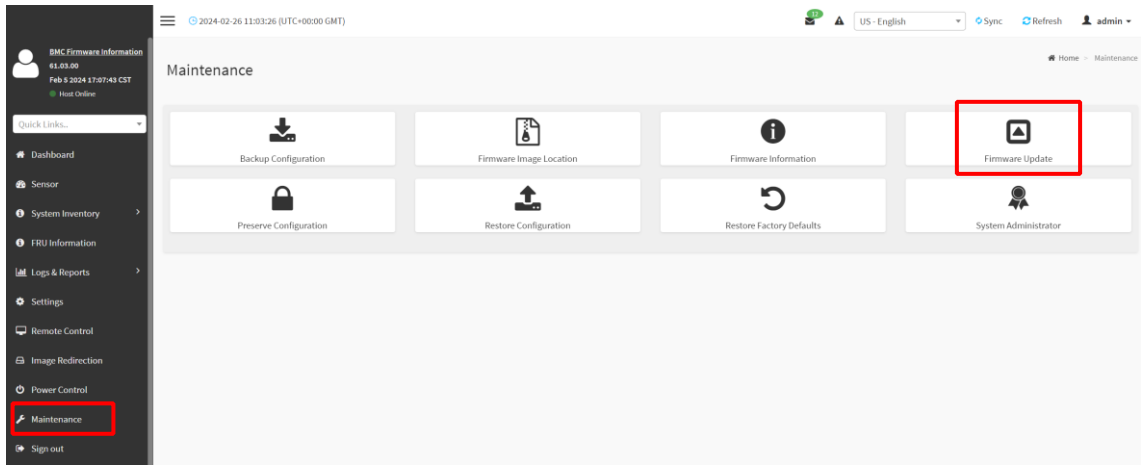


Figure 8.

2. Download the firmware update package to your computer, upload the "image.rbu" file from the folder, and click on the "Start firmware update" option.

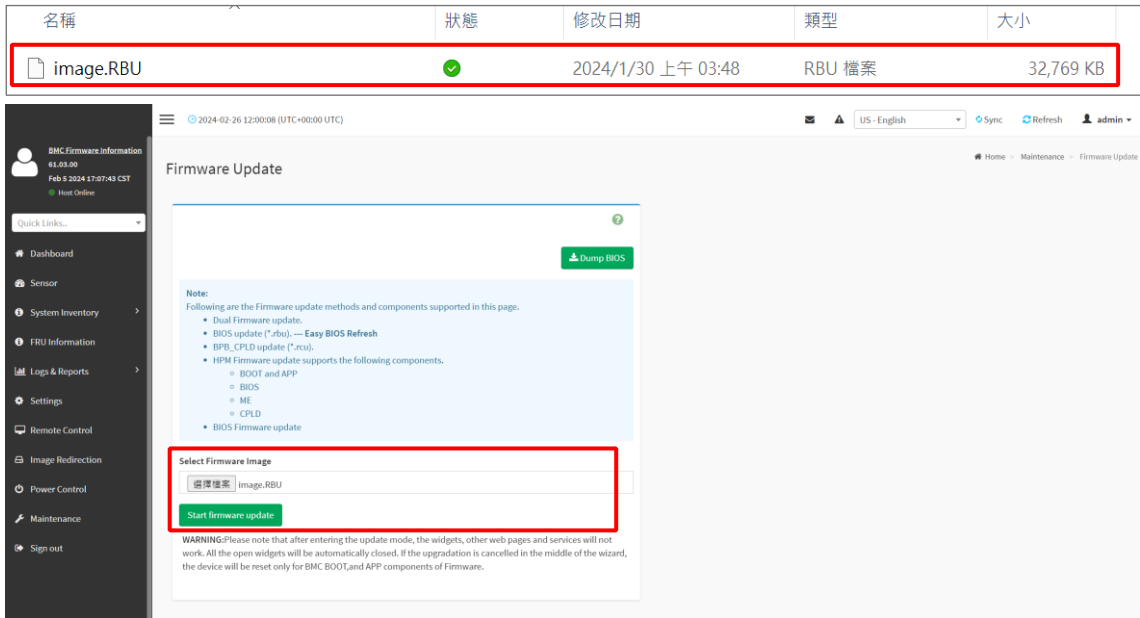


Figure 9.

- After pressing **“Start firmware update”**, you will see the following screen. Press **“Proceed to flash”** to start the update.

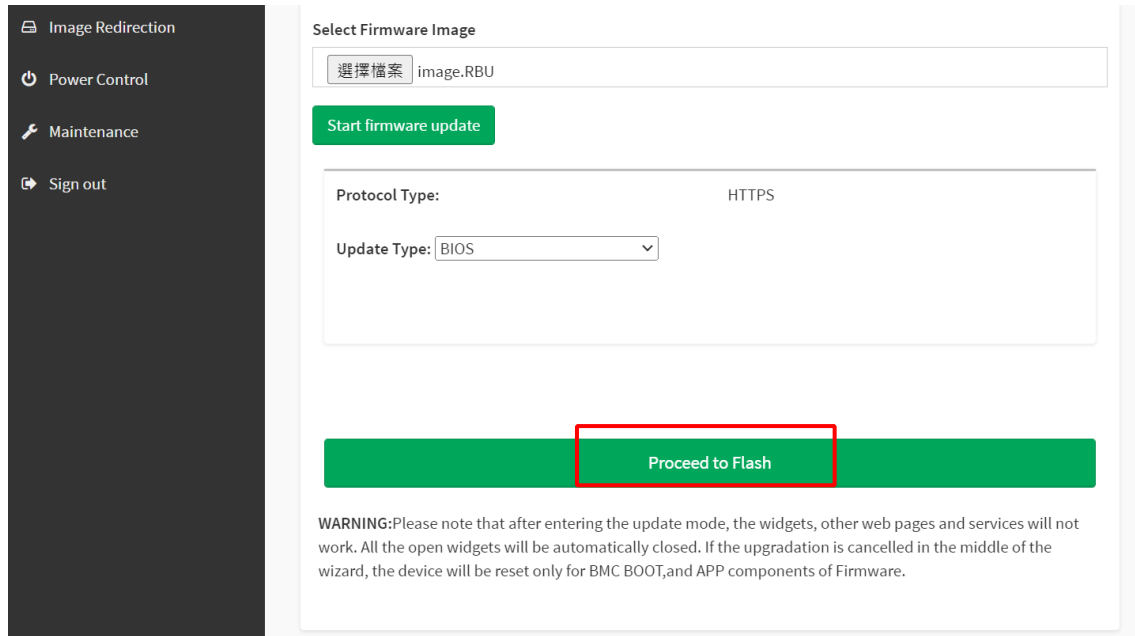


Figure 10.

- Press **“OK”** to continue

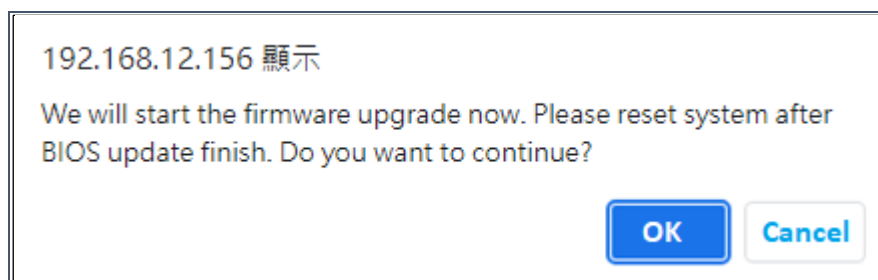


Figure 11.

5. The system starts the update process. Please wait for the update to be completed.

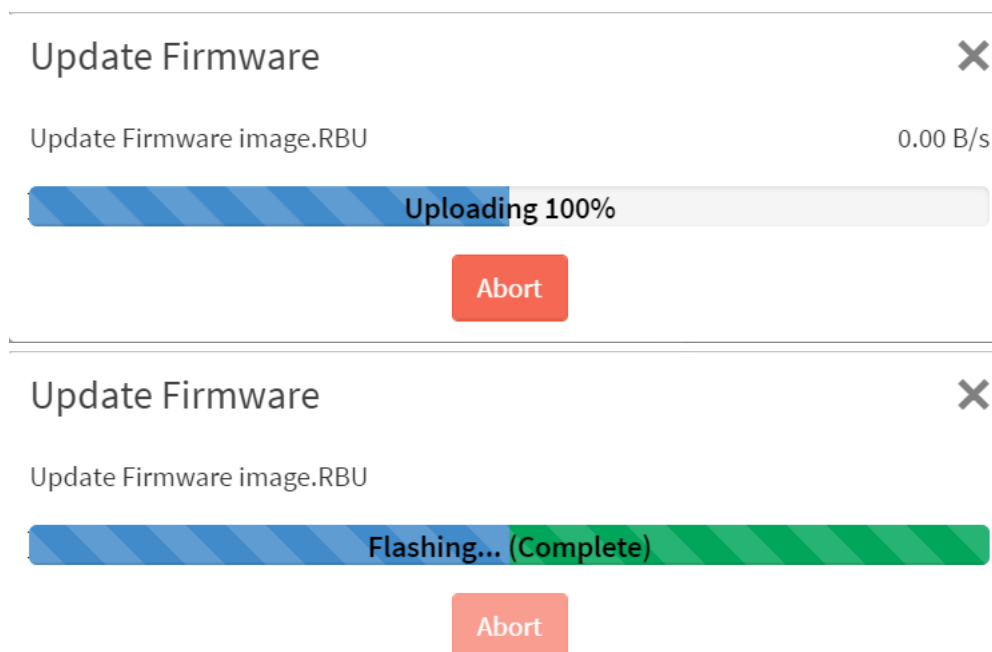


Figure 12.

6. After the update is completed, please **manually restart the system** to load the new BIOS image.

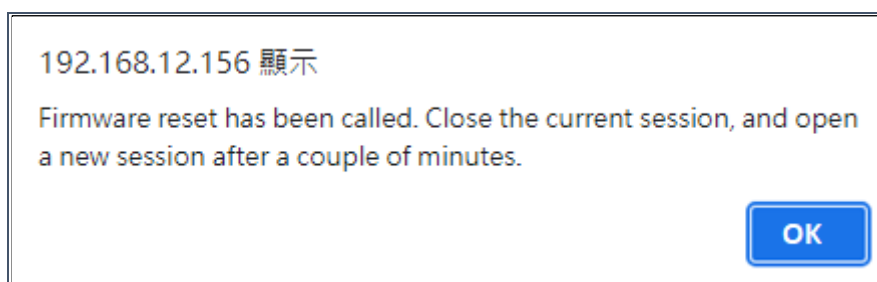


Figure 13.

7. After the system has restarted and completed the update, please check the BIOS version in the BIOS Setup and the BMC Web UI to ensure that it is correct.

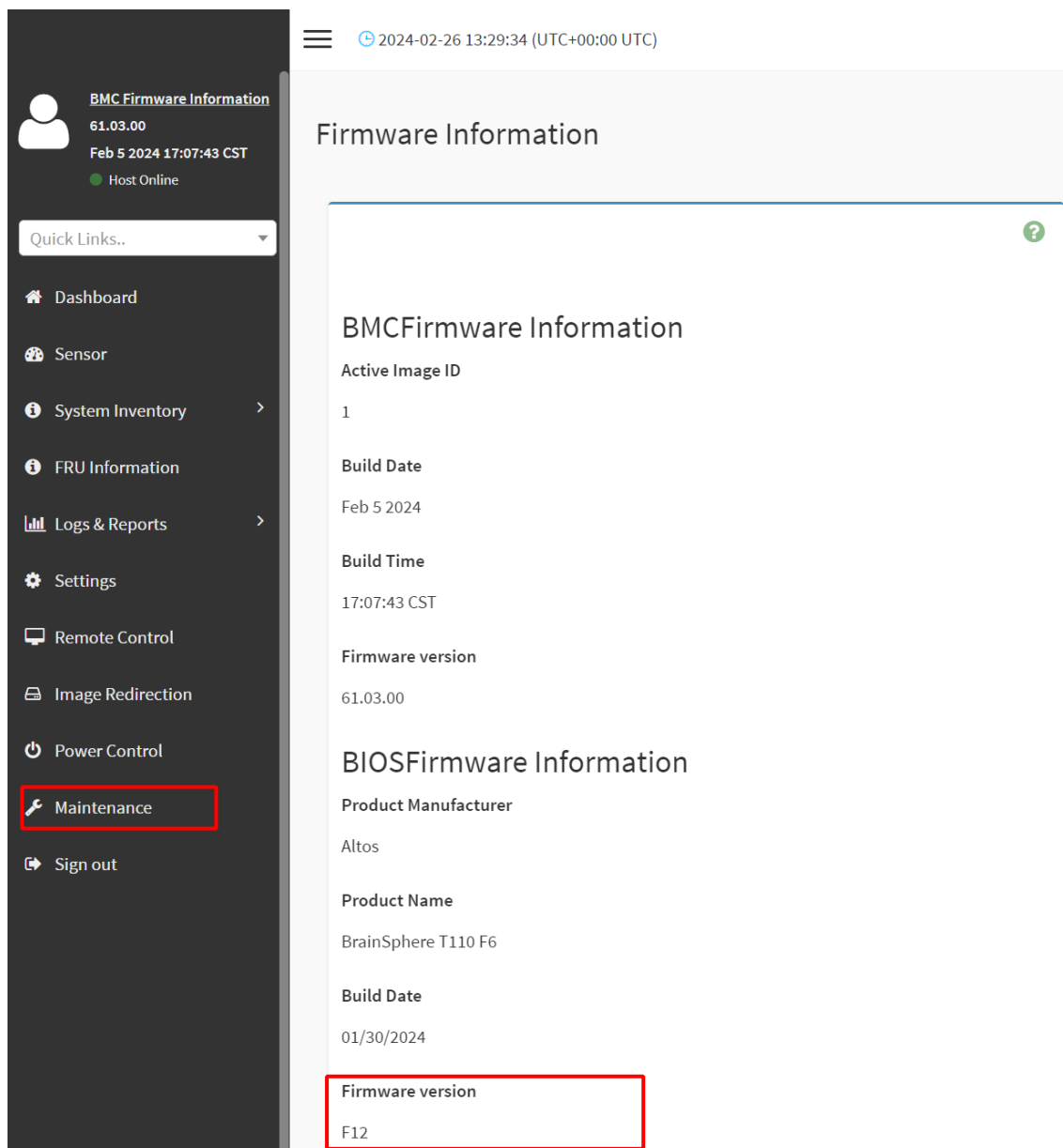


Figure 14.

8. Please ensure the BIOS Version is the latest edition.

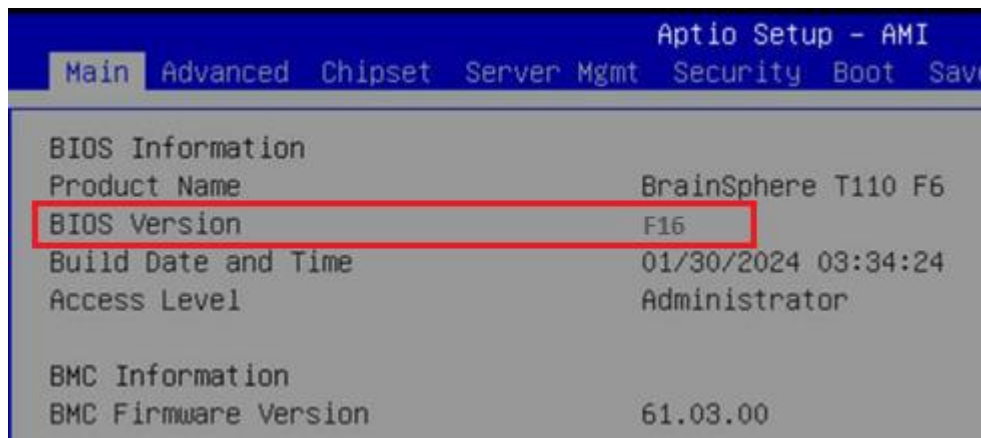


Figure 15.